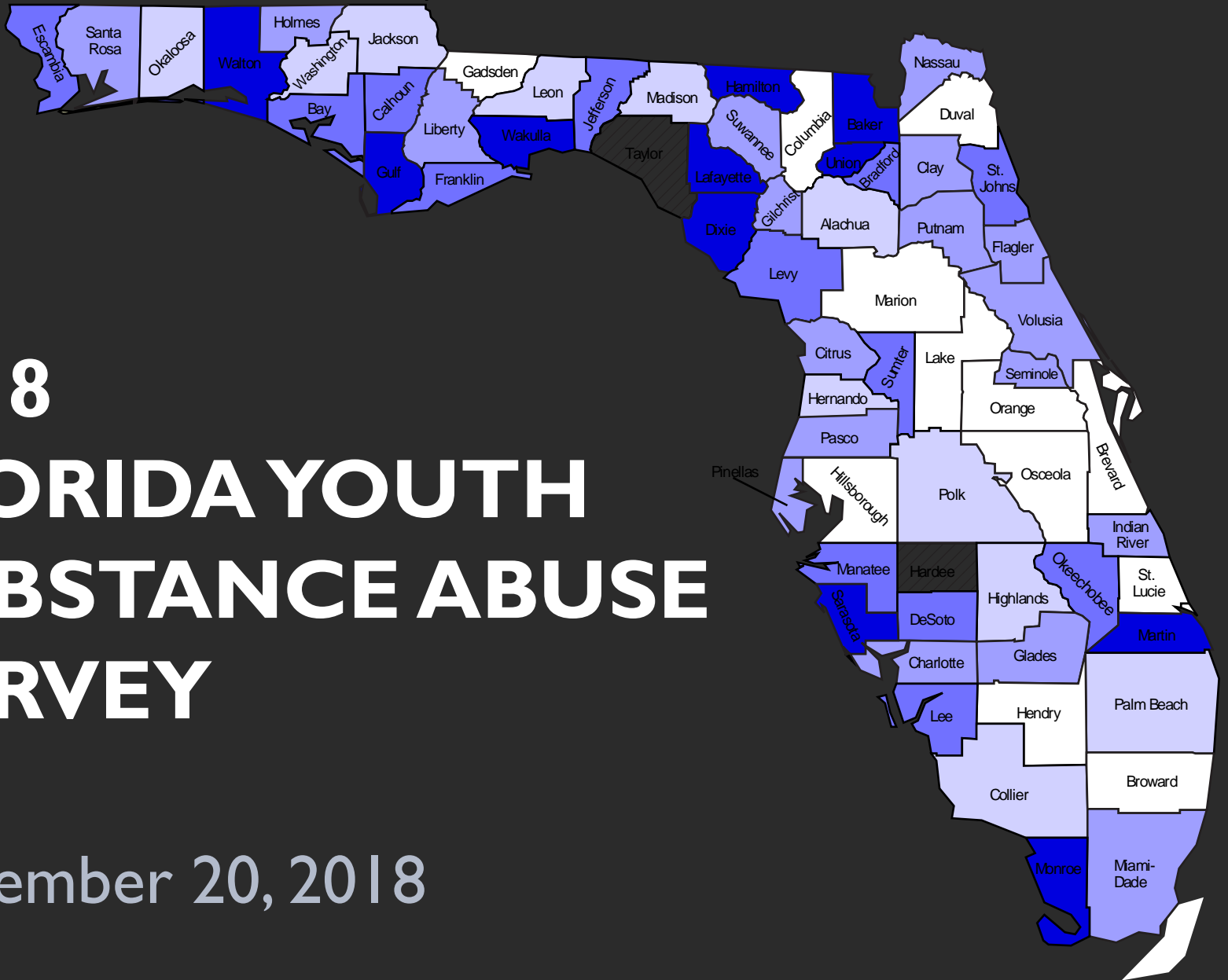


# 2018 FLORIDA YOUTH SUBSTANCE ABUSE SURVEY

September 20, 2018



# Presentation Outline

- A. FYSAS background and methodology
- B. Improvements in health behavior among Florida youth
- C. Ongoing and emerging challenges
- D. Student attitudes about school

# Background and Methods

- Since 2002, FYSAS is administered each spring to public middle school and high school students across Florida.
- Students were surveyed in 66 out of 67 Florida counties.
- Final sample size was 54,611 across grades 6 through 12.
- The margin of error is less than 1.0 percentage points for state-level M.S. and H.S. prevalence rates.

# Major Improvements In Student Health Behavior

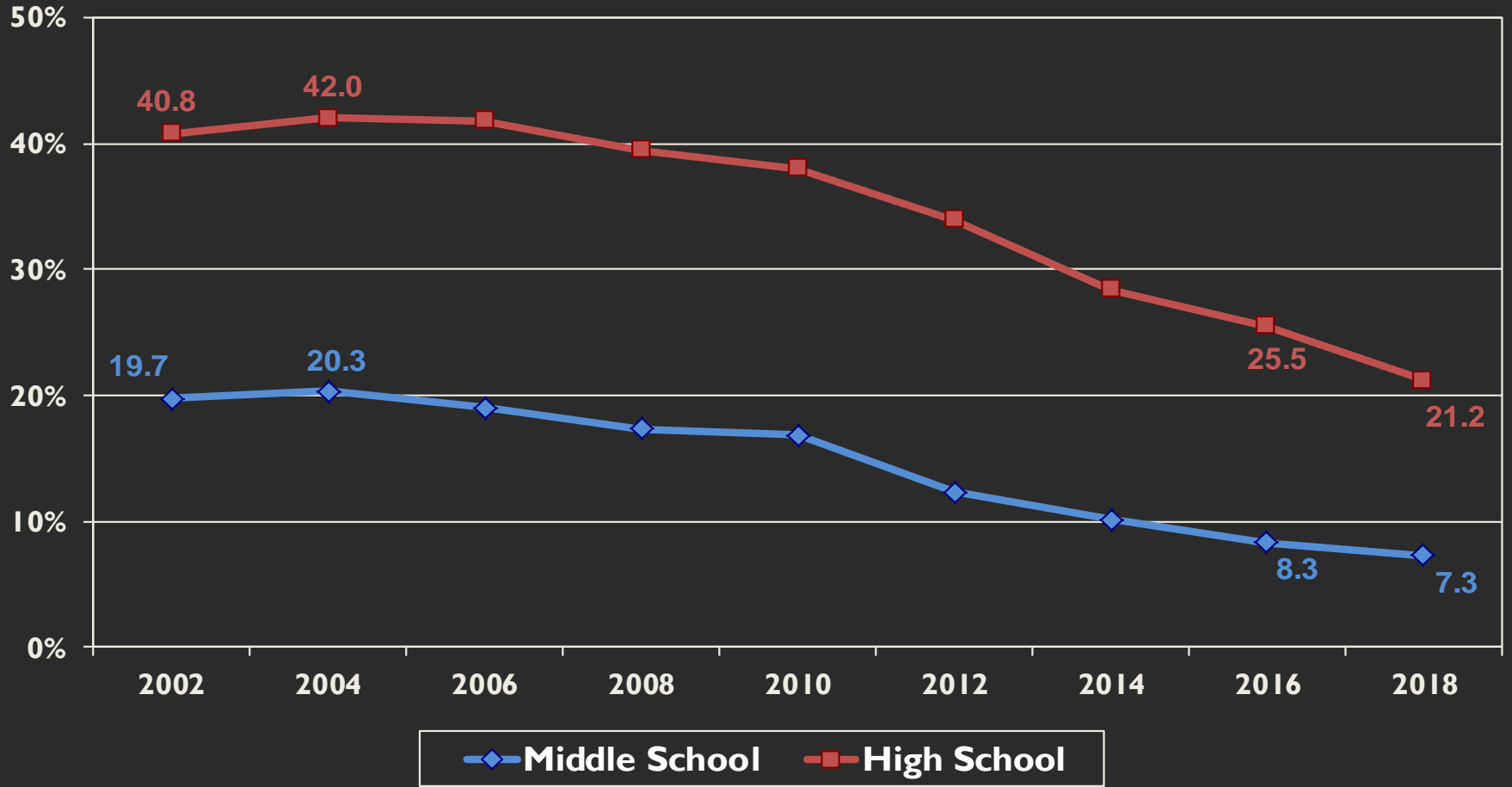
1. Reductions in alcohol use
2. Reductions in cigarette use
3. Low prevalence rates for illicit drugs other than marijuana
4. Reductions in the early initiation of drug use
5. Reductions in other antisocial behaviors

# Alcohol Use Among Florida Students

- Long-term reductions in alcohol use
- Short-term reductions, so trend is continuing
- Higher-risk alcohol use also down

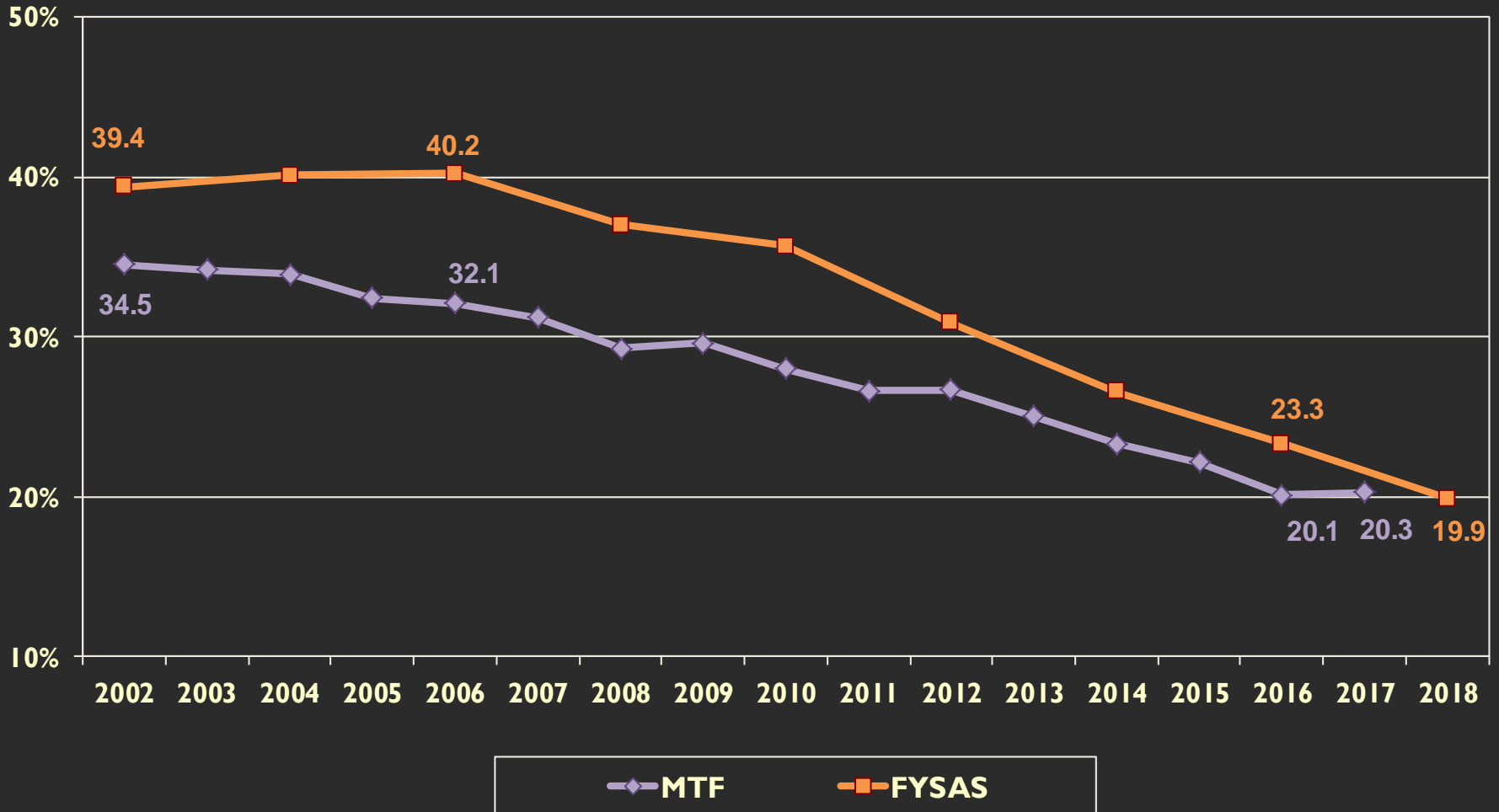
# Alcohol

## Past-30-Day Prevalence by Grade Cohort

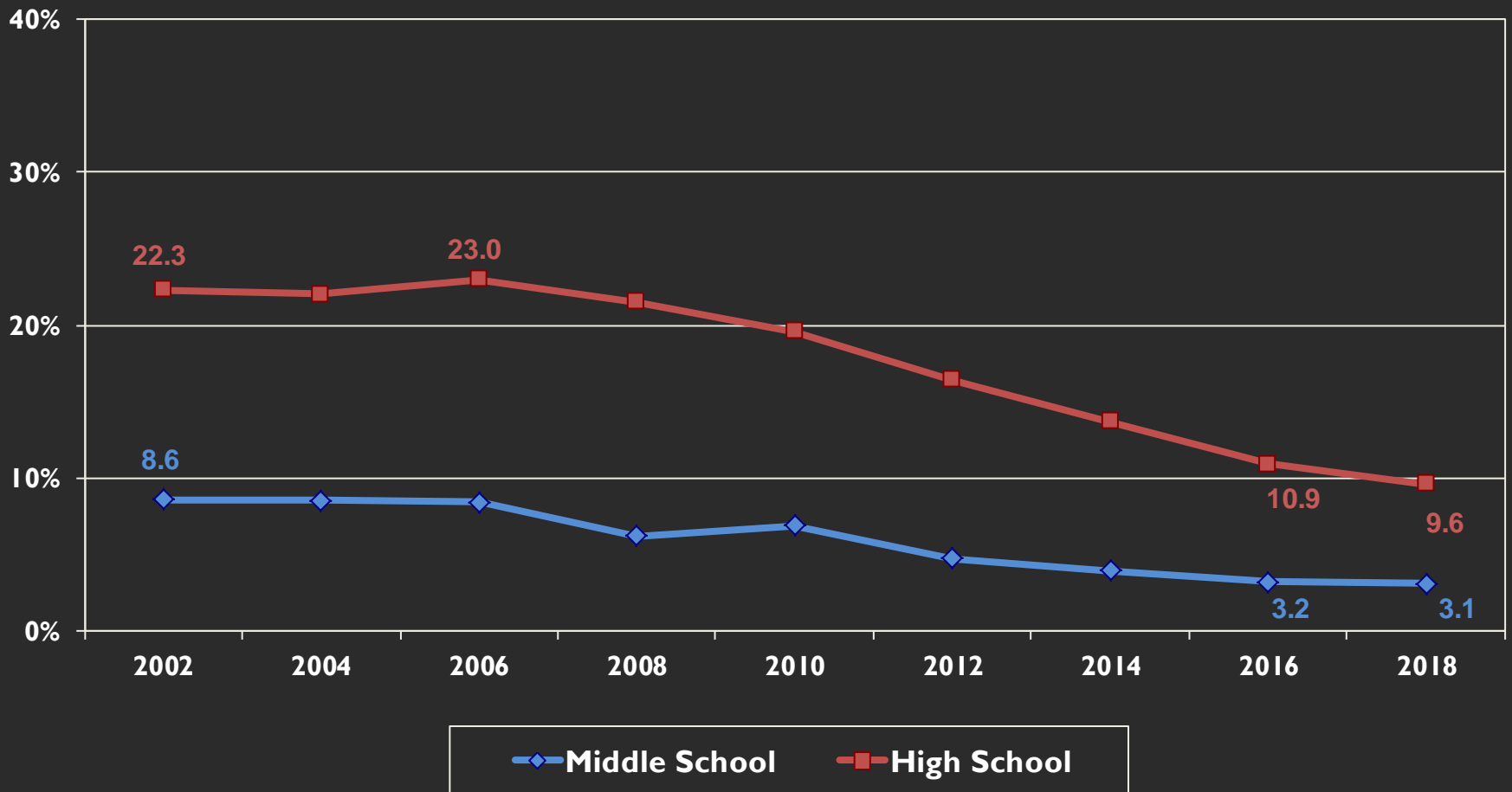


# Alcohol

## Past-30-Day Prevalence for 8th, 10th and 12th Graders



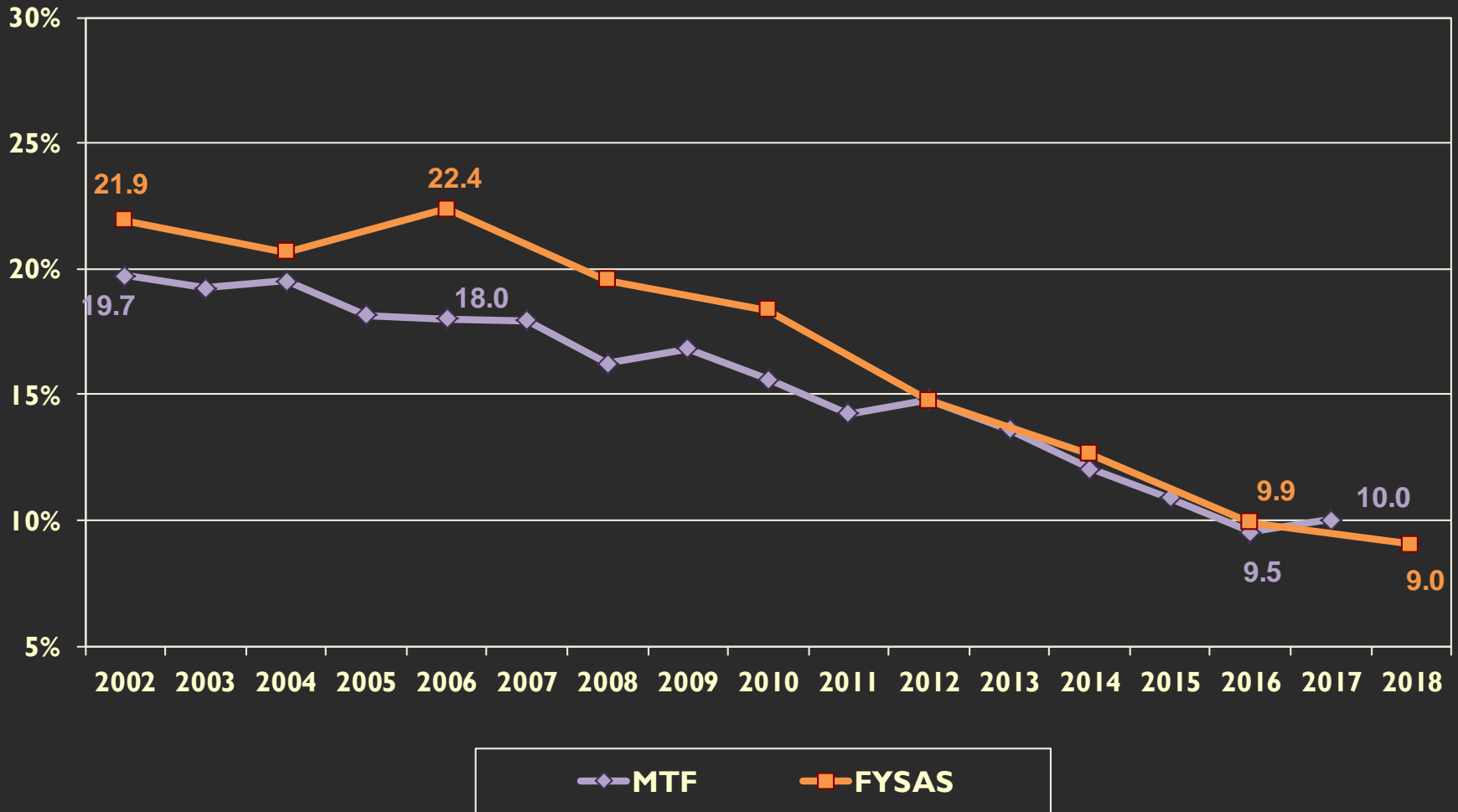
# Binge Drinking Prevalence by Grade Cohort





# Binge Drinking

## Prevalence for 8th, 10th and 12th Graders



# Blacking Out from Drinking

## Lifetime Prevalence Among High School Students



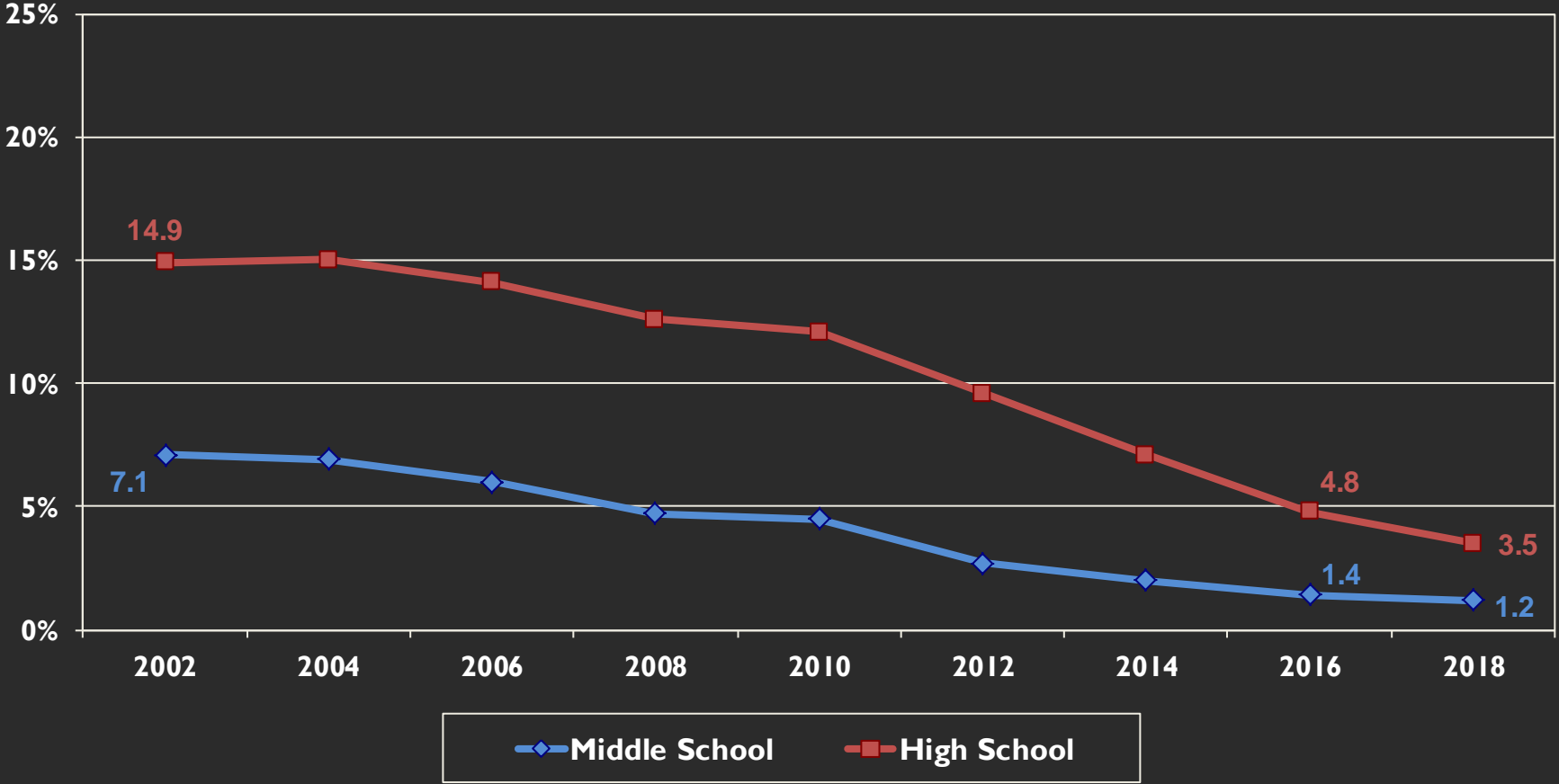
On how many occasions (if any) in your lifetime have you woken up after a night of drinking alcoholic beverages and not been able to remember the things that you did or places that you went?

# Cigarette Use Among Florida Students

- Long-term reductions in cigarette use
- Short-term reductions among H.S. students continue
- Rates so low among M.S. students there isn't much room for further reductions

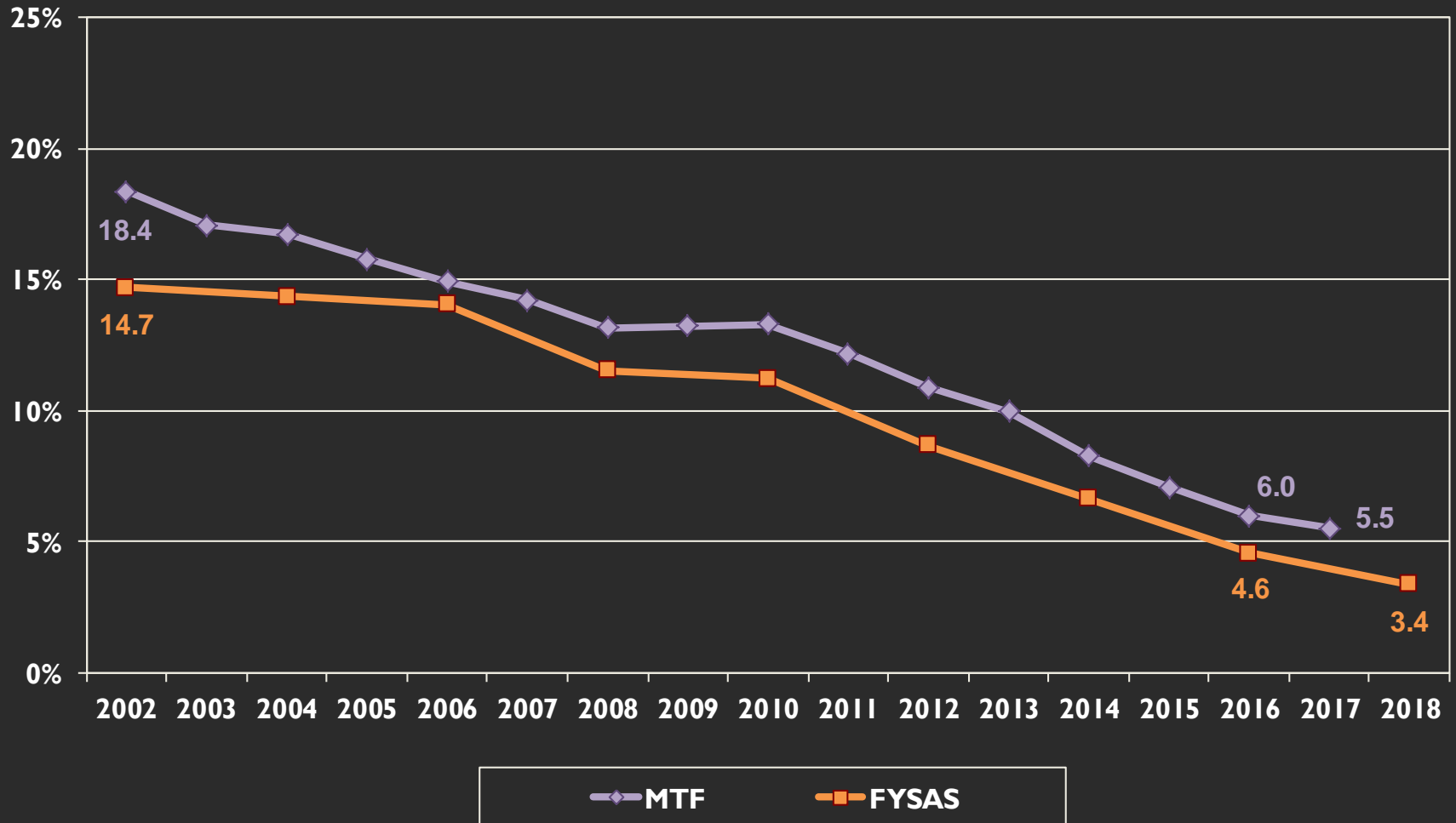
# Cigarettes

## Past-30-Day Prevalence by Grade Cohort



# Cigarettes

## Past-30-Day Prevalence for 8th, 10th and 12th Graders

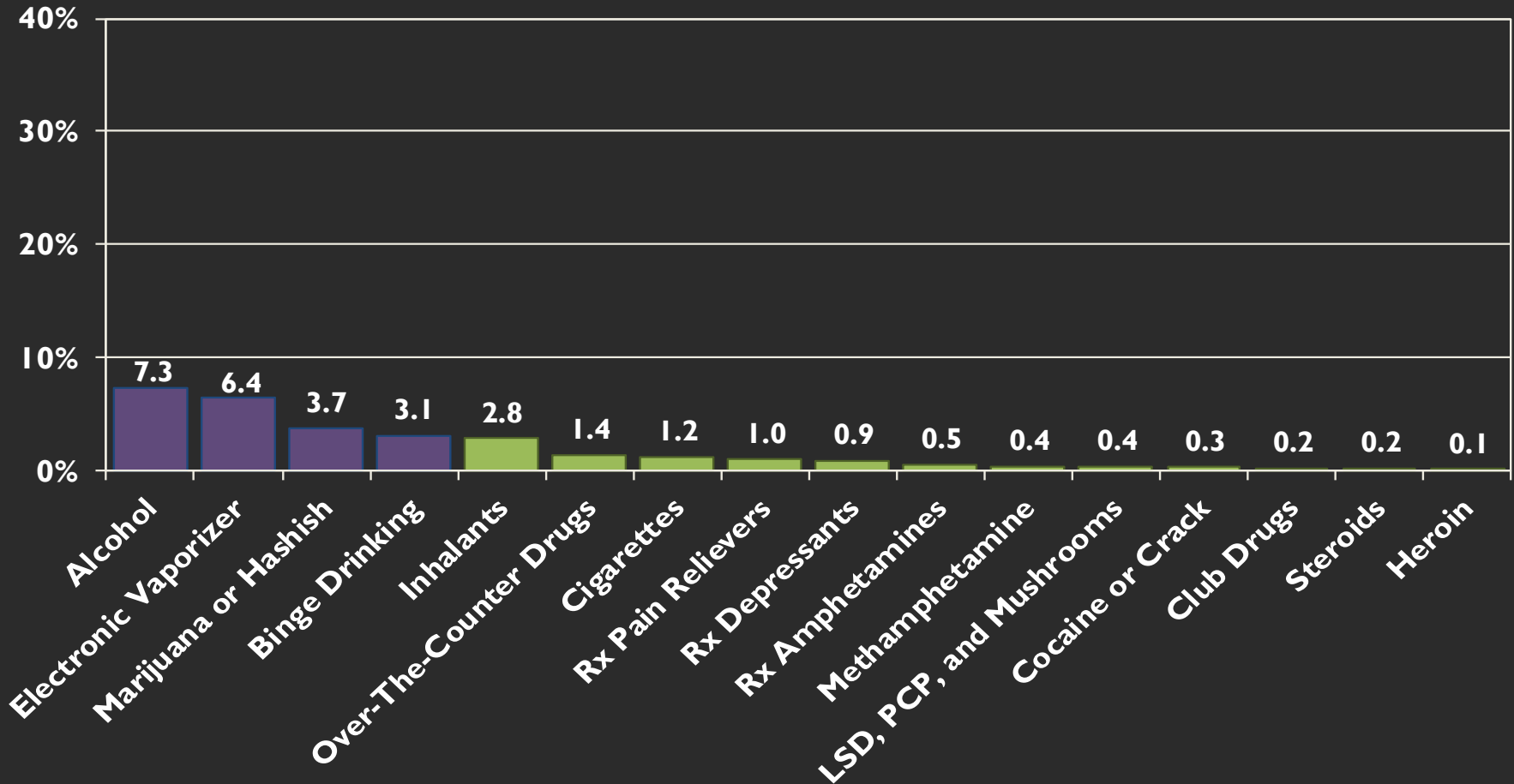


# Other Illicit Drug Use Among Florida Students

- Compared to alcohol, cigarettes, vaping, and marijuana, other illicit drug use is very low.
- Rates for other illicit drug use have declined over time.
- Reductions are not as large as for alcohol and cigarettes.

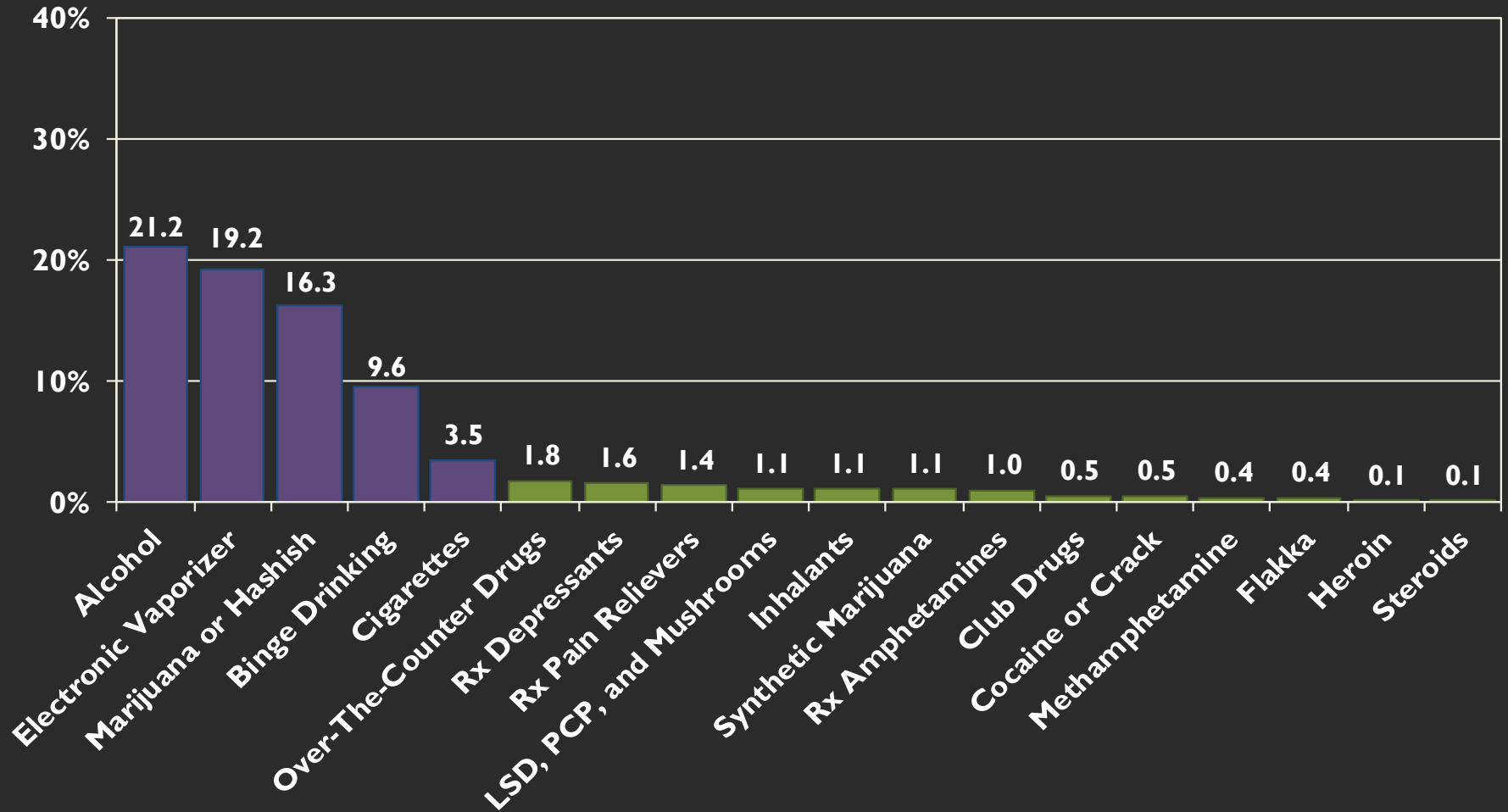
# Past-30-Day Prevalence

## Middle School



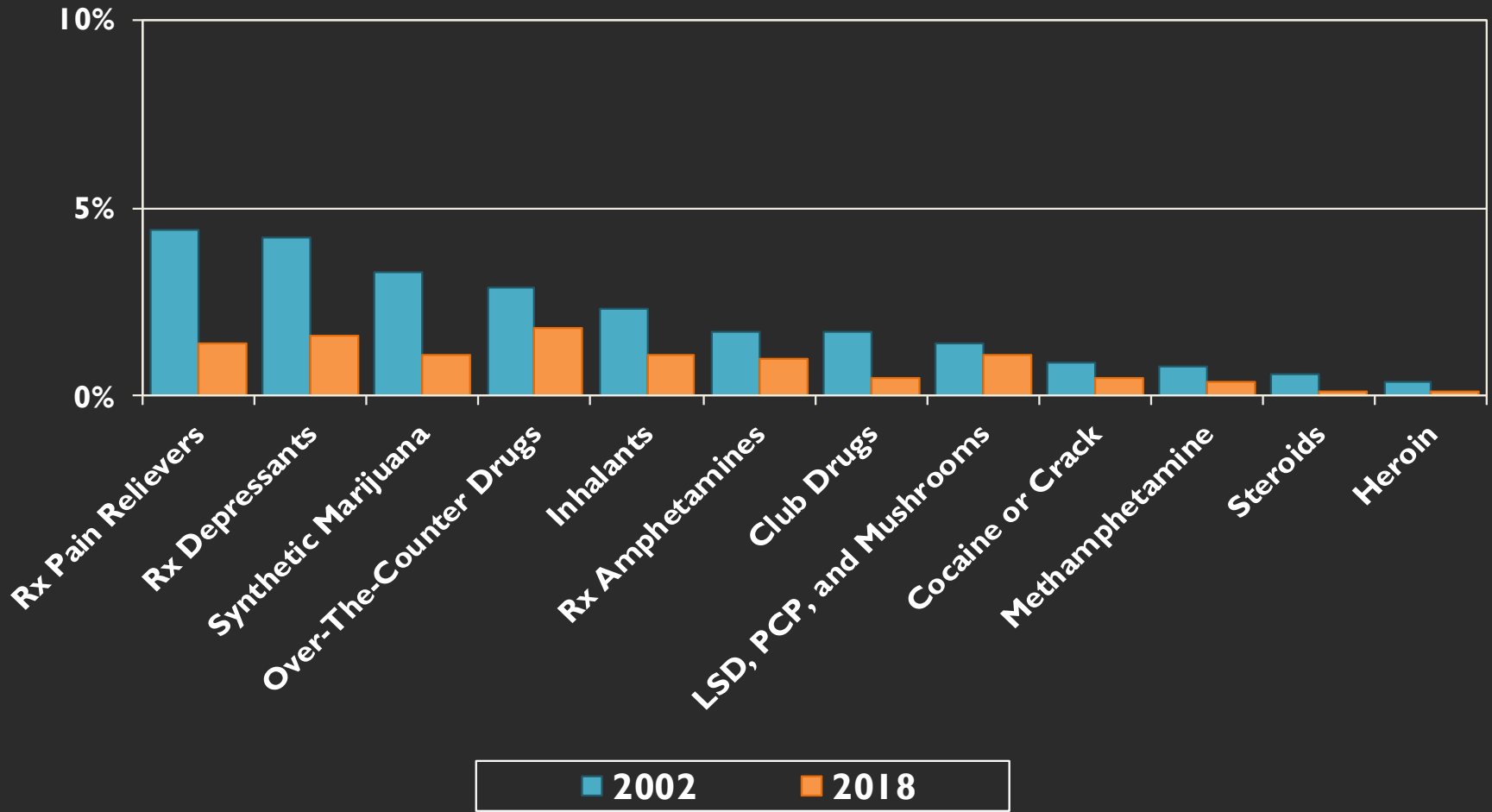
# Past-30-Day Prevalence

## High School





# Past-30-Day Prevalence High School

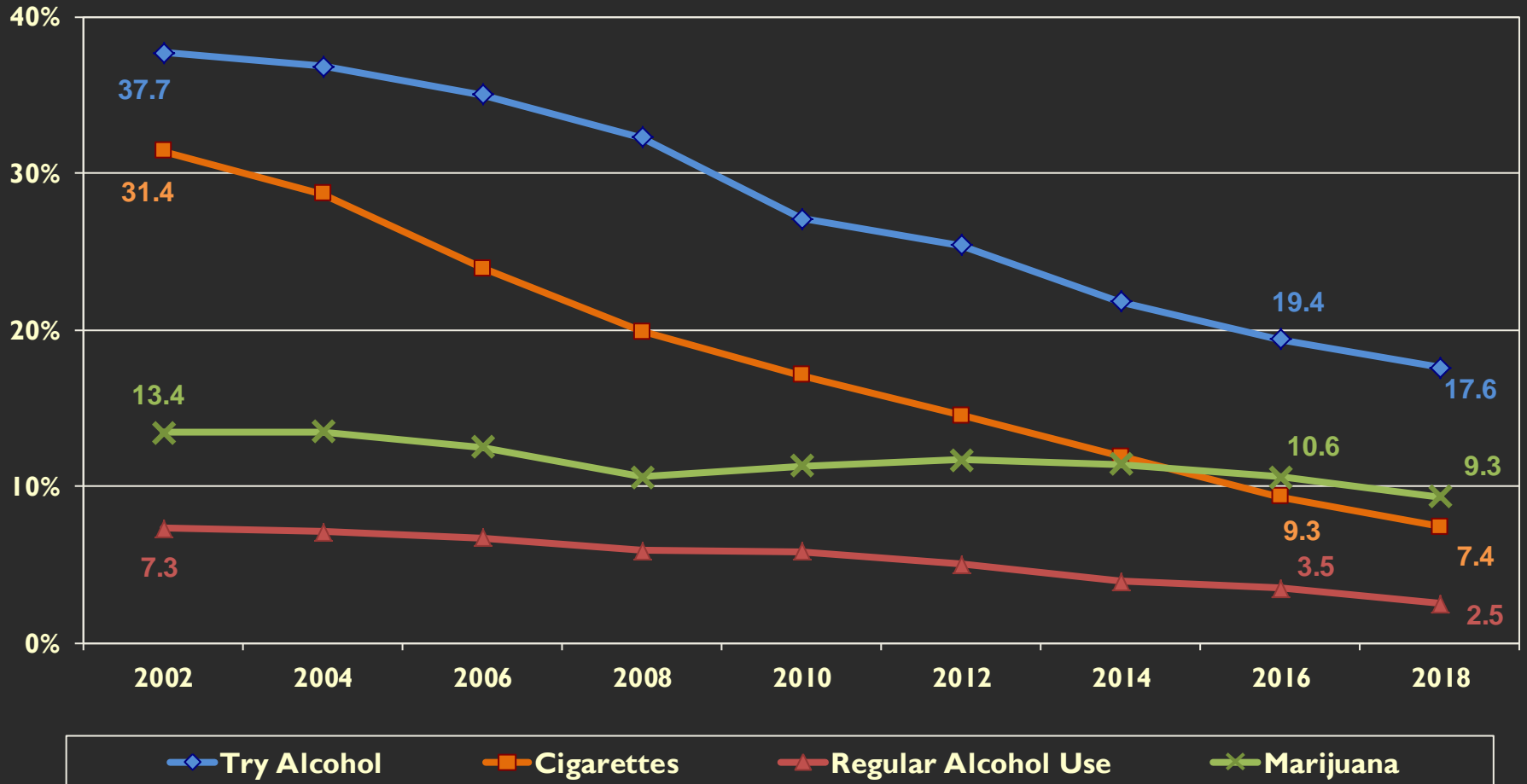


# Reductions in Early Initiation of Drug Use

- Early initiation is linked to:
  - *Higher rates of substance use*
  - *Riskier forms of substance use*
  - *Lower academic achievement*
  - *Mental health problems, including depression and suicidal ideation*
  - *Riskier sexual behavior*

# Early Drug Use

## Initiation by Age 13 among High School Students

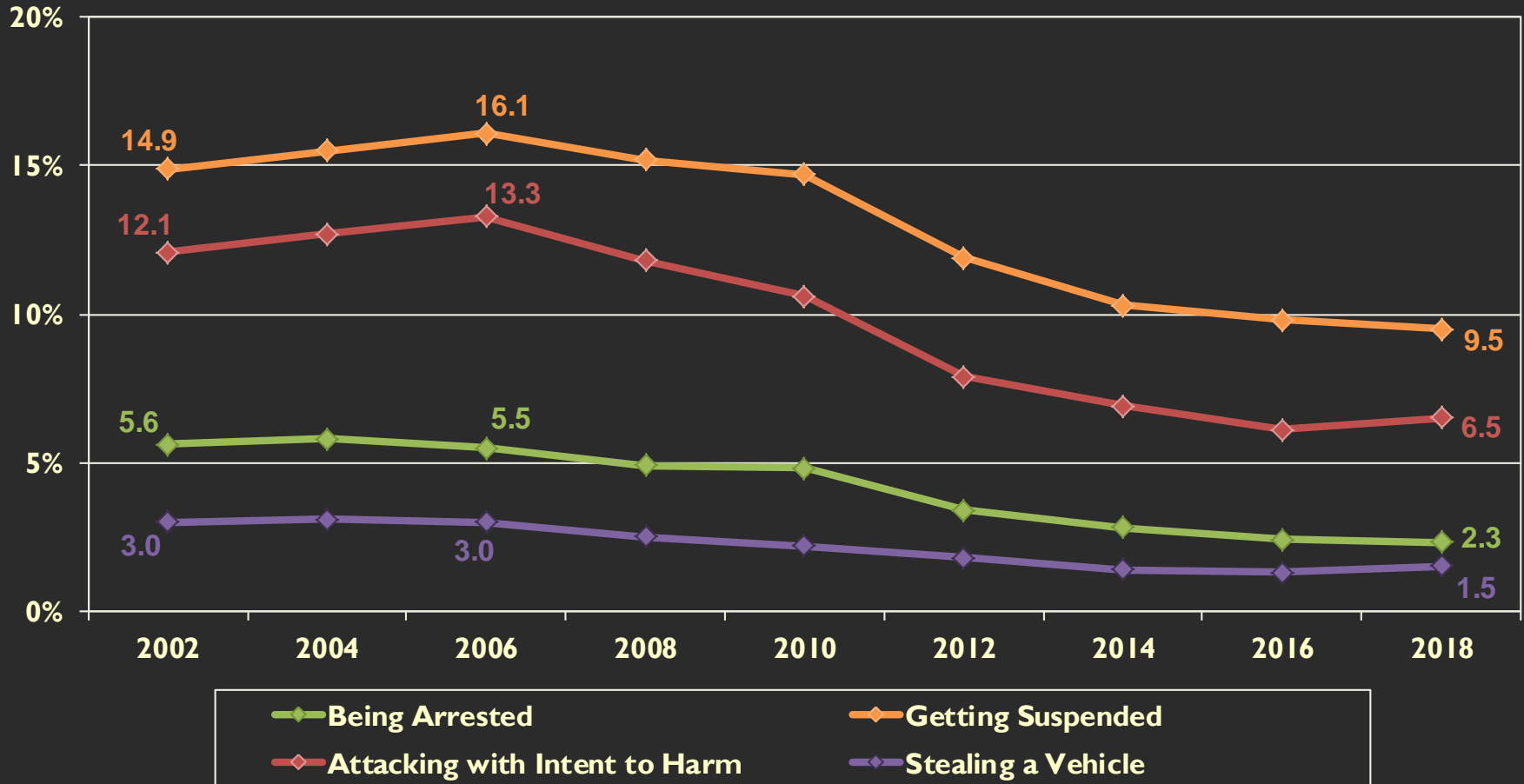


# Reductions in Other Antisocial Behaviors

- Florida trends are similar to national trends:
  - *Nationally, youth arrest rates declined 70% between their peak in 1994 and 2016.*
  - *School suspension rates have dropped in many parts of the country, including the 50% reductions for California and New York City this decade.*

# Other Antisocial Behaviors

## Past-12-Month Prevalence

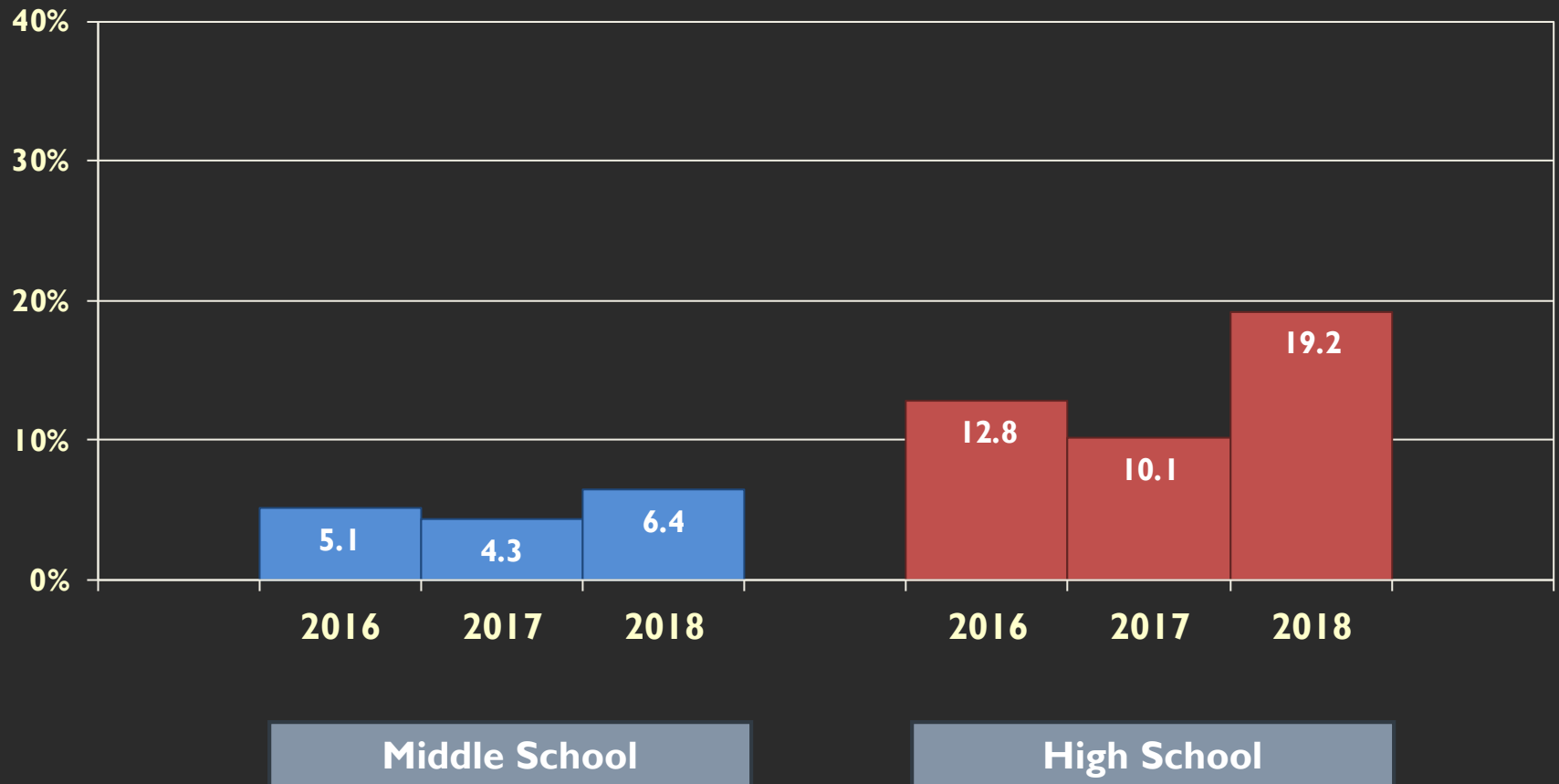


# Health Behavior Challenges

1. Vaping has emerged as one of the most prevalent forms of youth substance use.
2. Unlike alcohol and cigarettes and other drugs, the long-term trend for marijuana use is mixed.
3. Substance use and automobile safety remain a major risk area for Florida students.

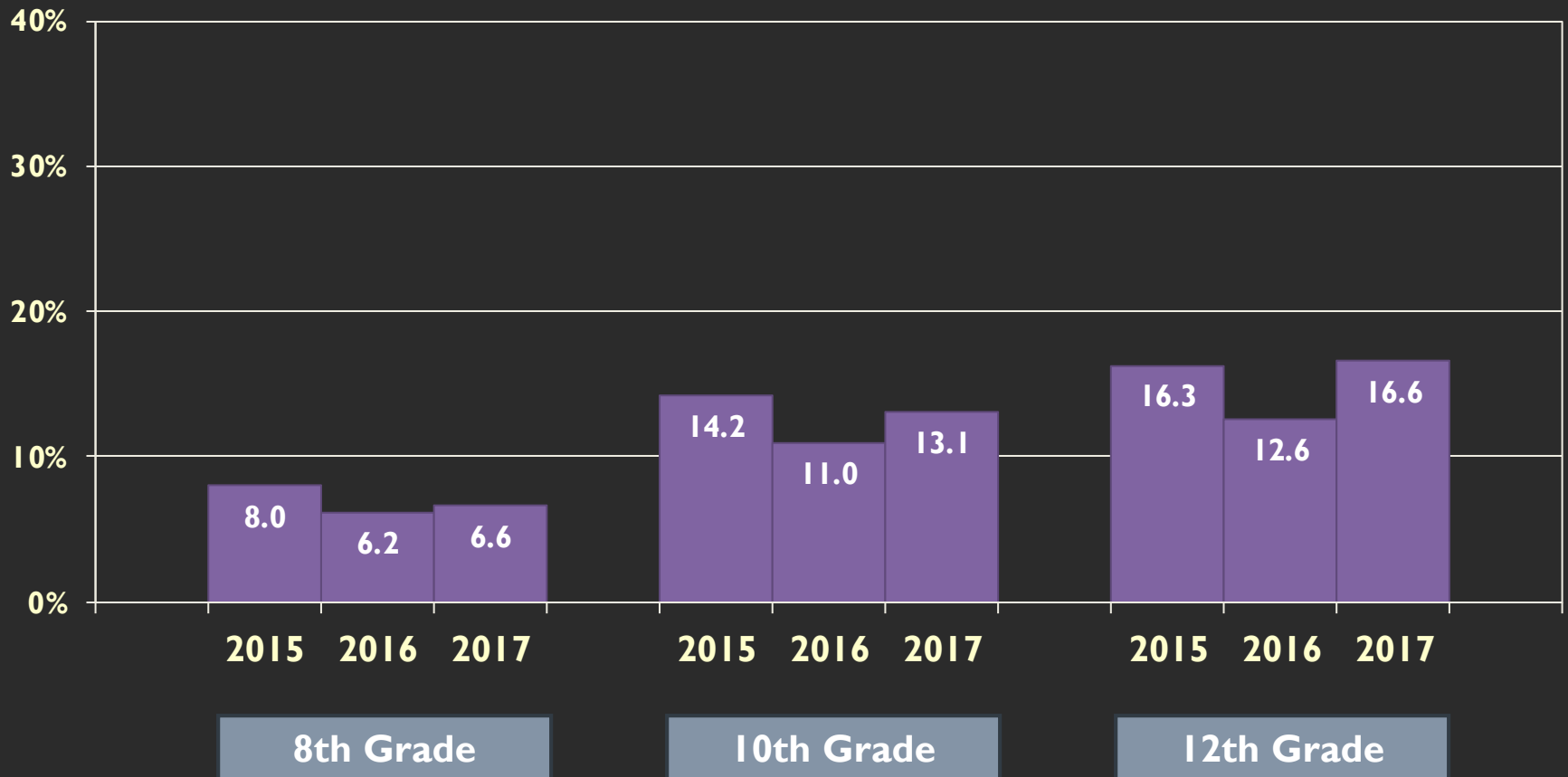
# Electronic Vaporizer Use

## Past-30-Day Prevalence



# Electronic Vaporizer use

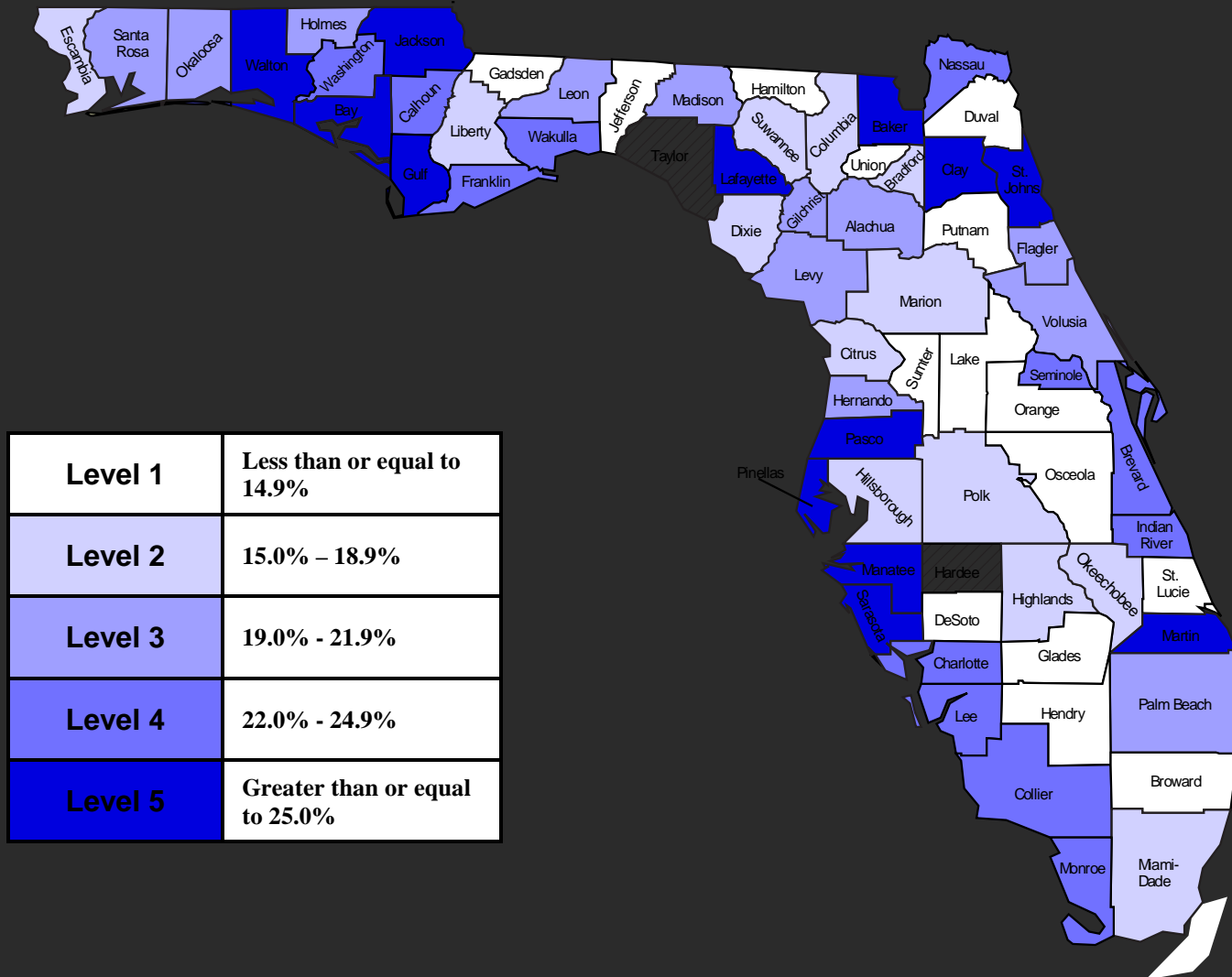
## Past-30-Day Prevalence—National Trends





# Electronic Vaporizers

## Past-30-Day Prevalence among High School Students



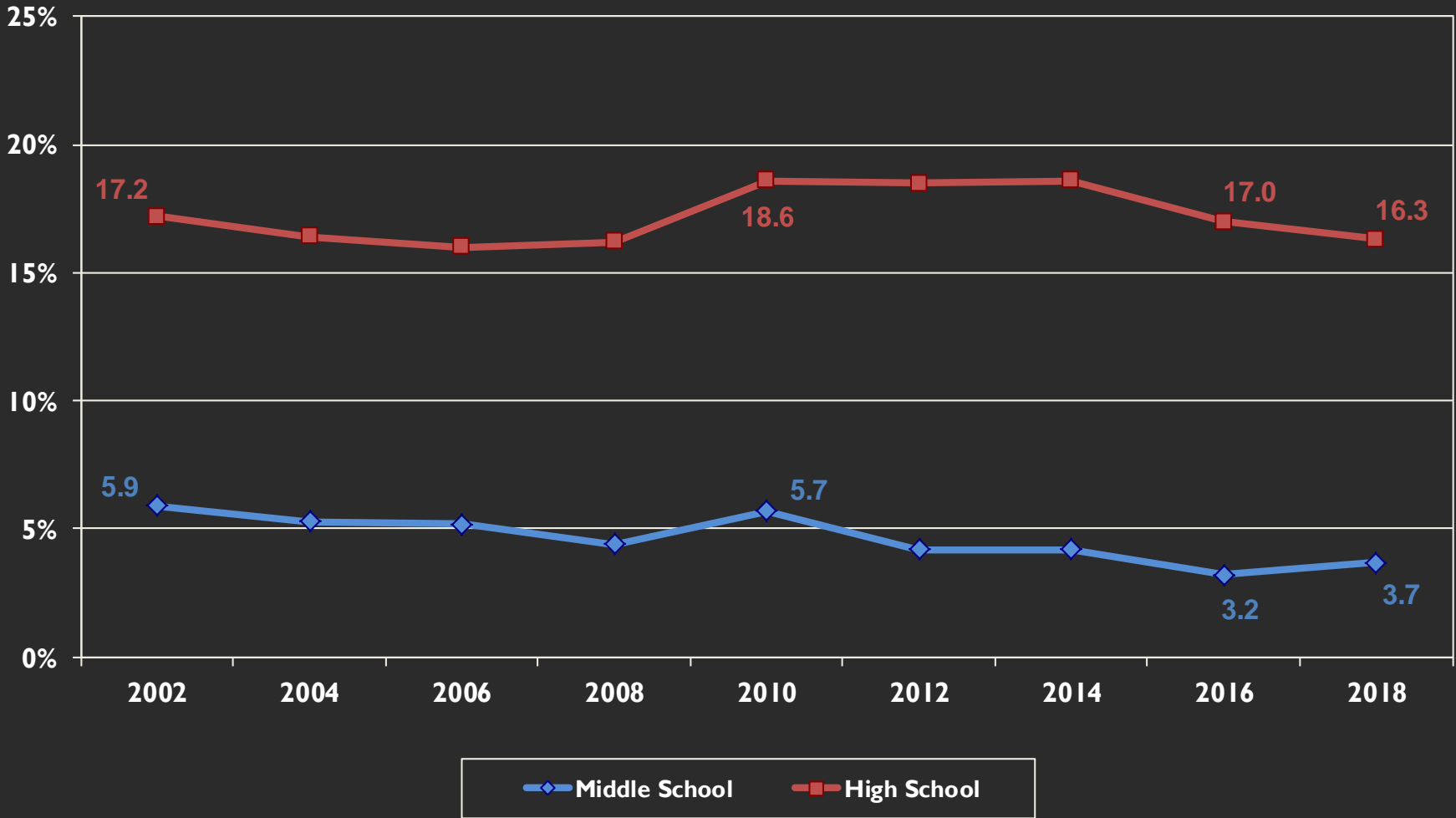
**FDA News Release:**

**9/18/18**

**FDA launches new, comprehensive campaign to warn kids about the dangers of e-cigarette use as part of agency's Youth Tobacco Prevention Plan, amid evidence of sharply rising use among kids**

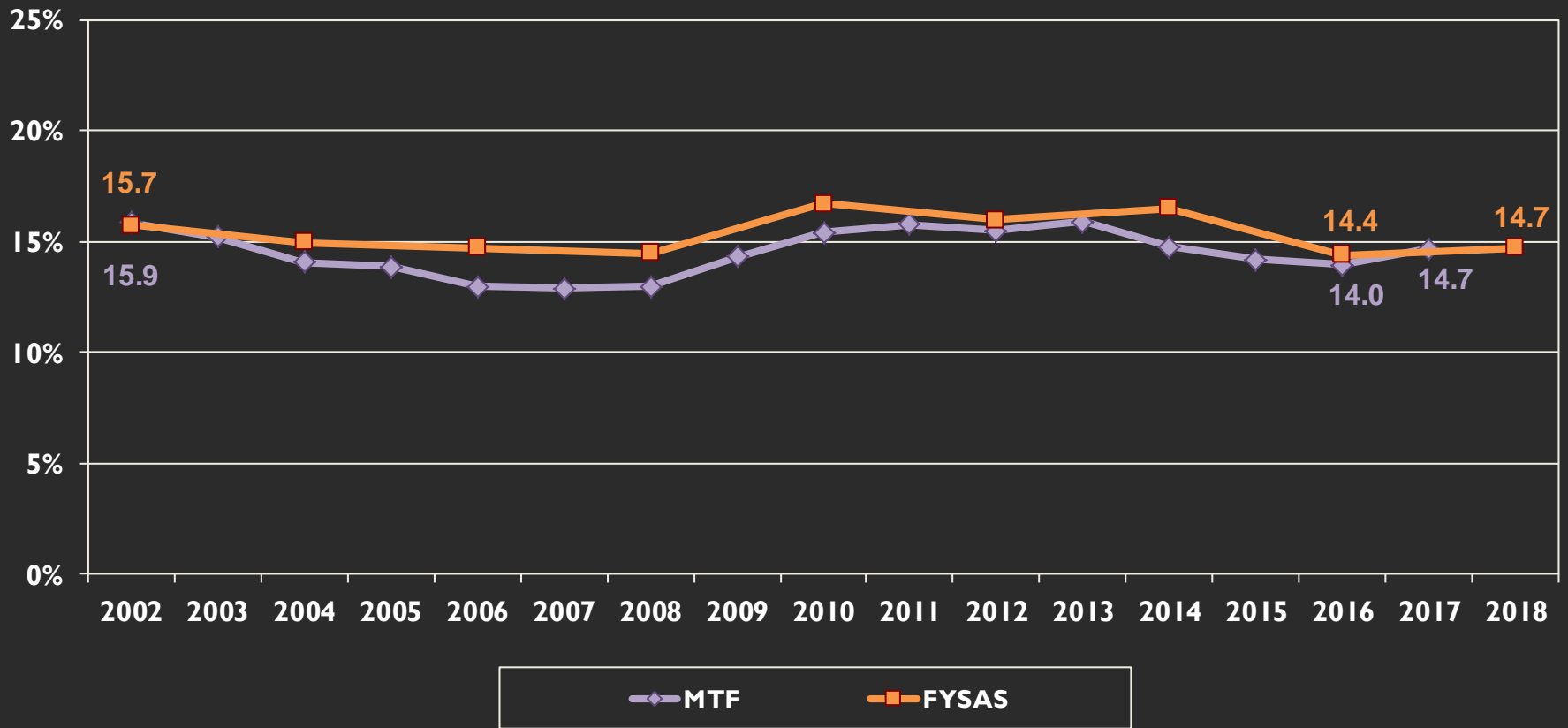
# Marijuana

## Past-30-Day Prevalence by Grade Cohort



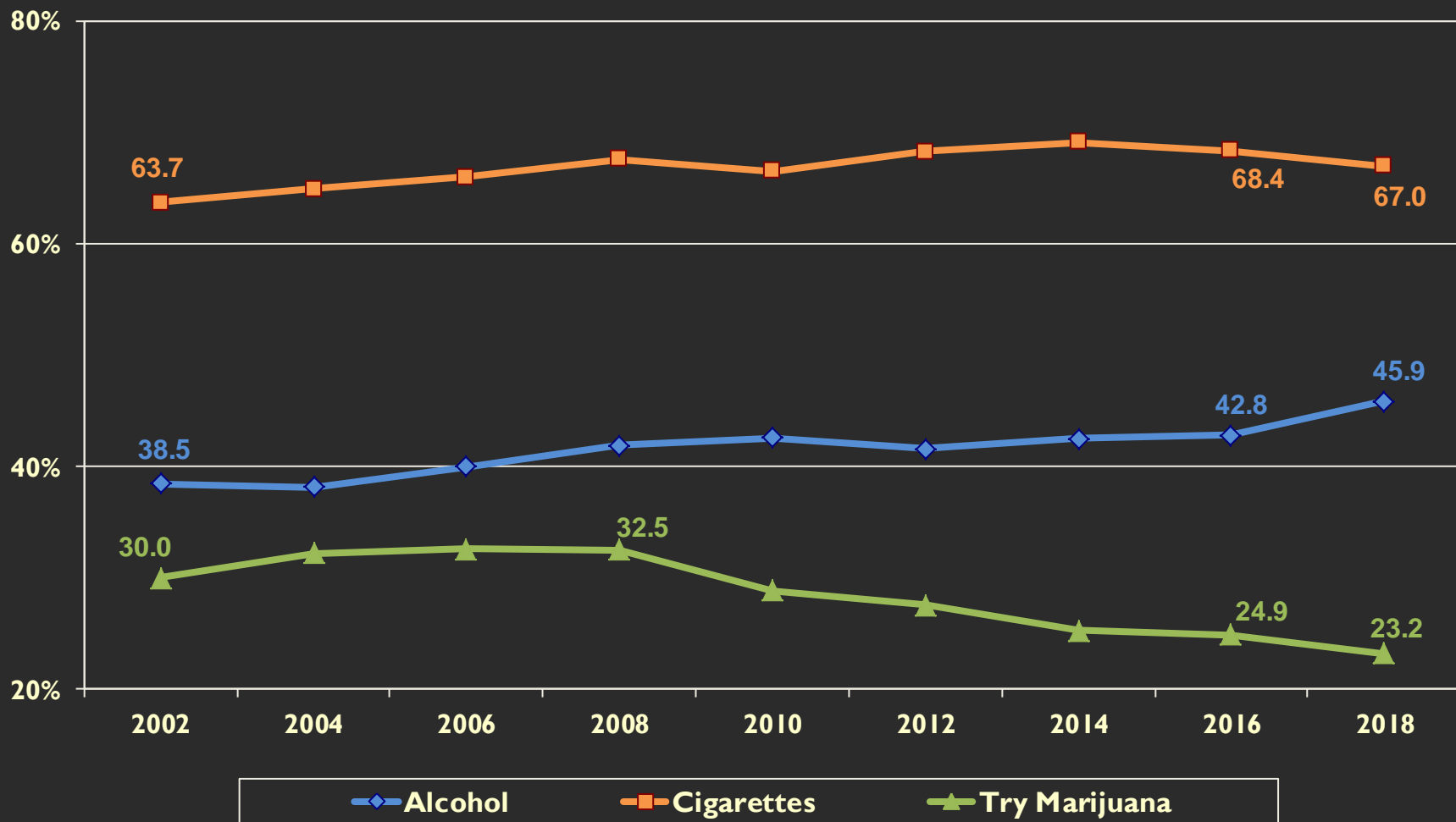
# Marijuana

## Past-30-Day Prevalence for 8th, 10th and 12th Graders



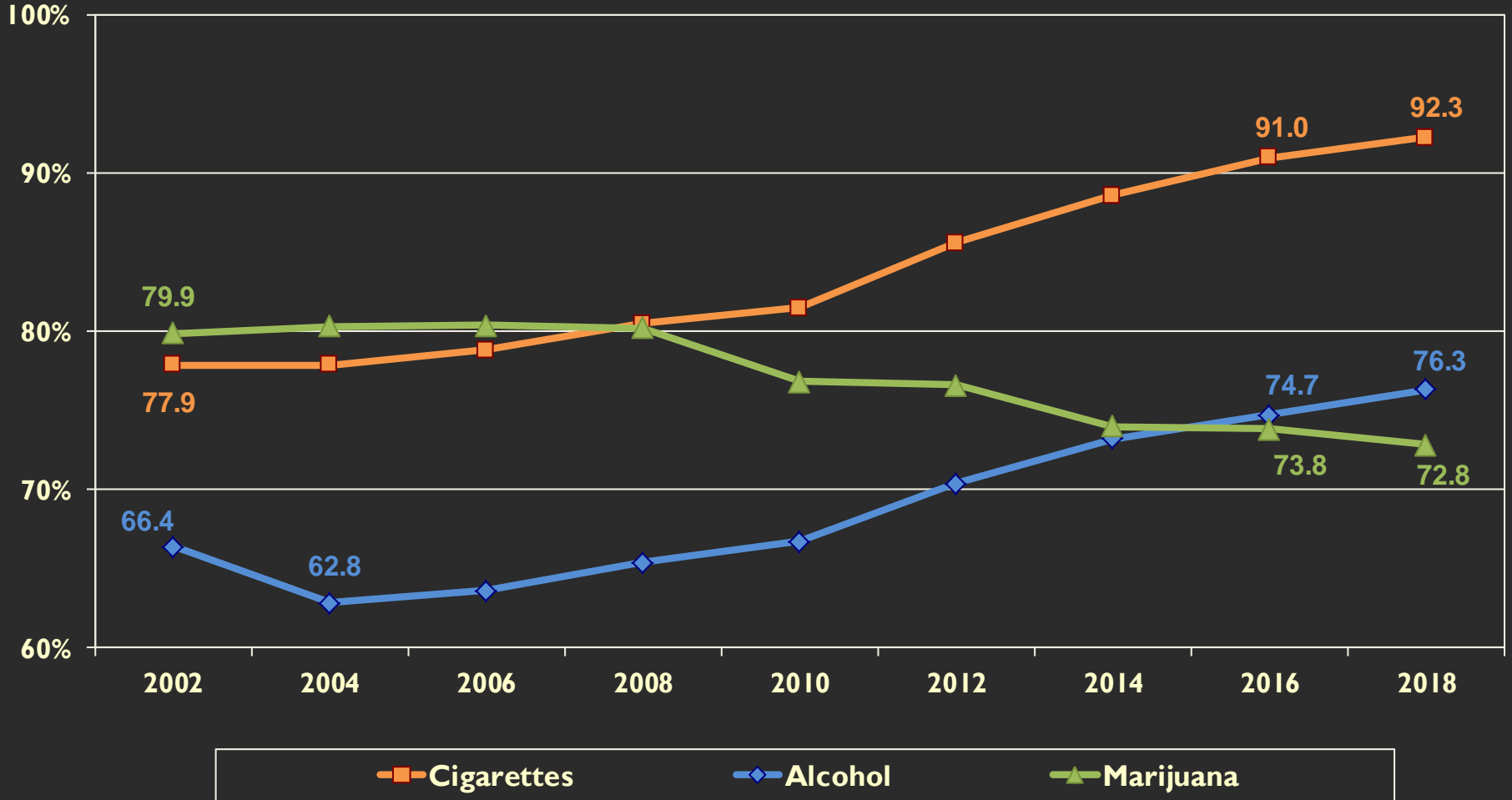
# Risk of Harm

## Percentage Reporting "Great Risk"



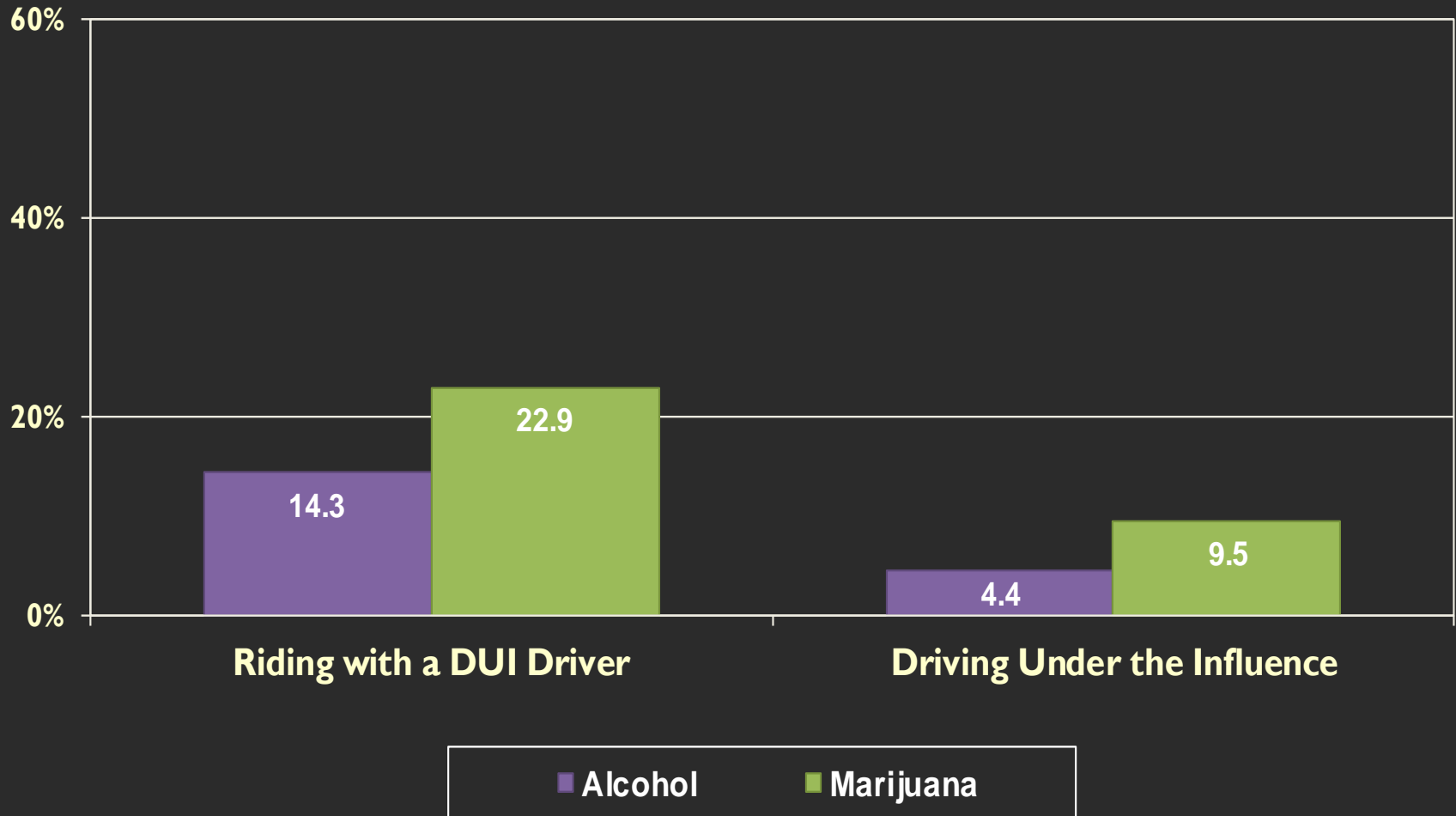
# Disapproval of Substance Use

## “Wrong” or “Very Wrong”



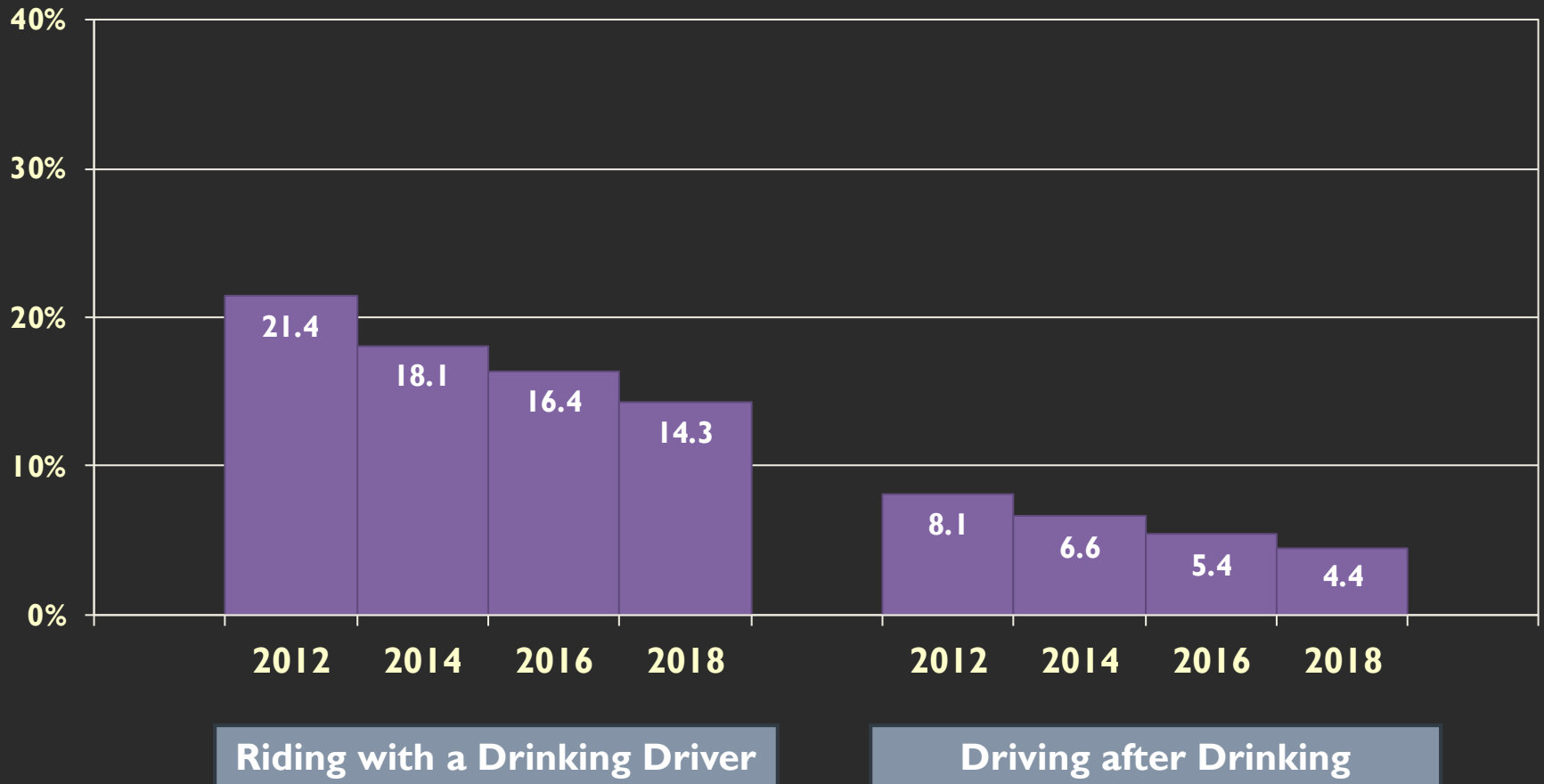
# Substance Use and Driving

## Past-30-Day Prevalence Among High School Students



# Alcohol and Driving Trends

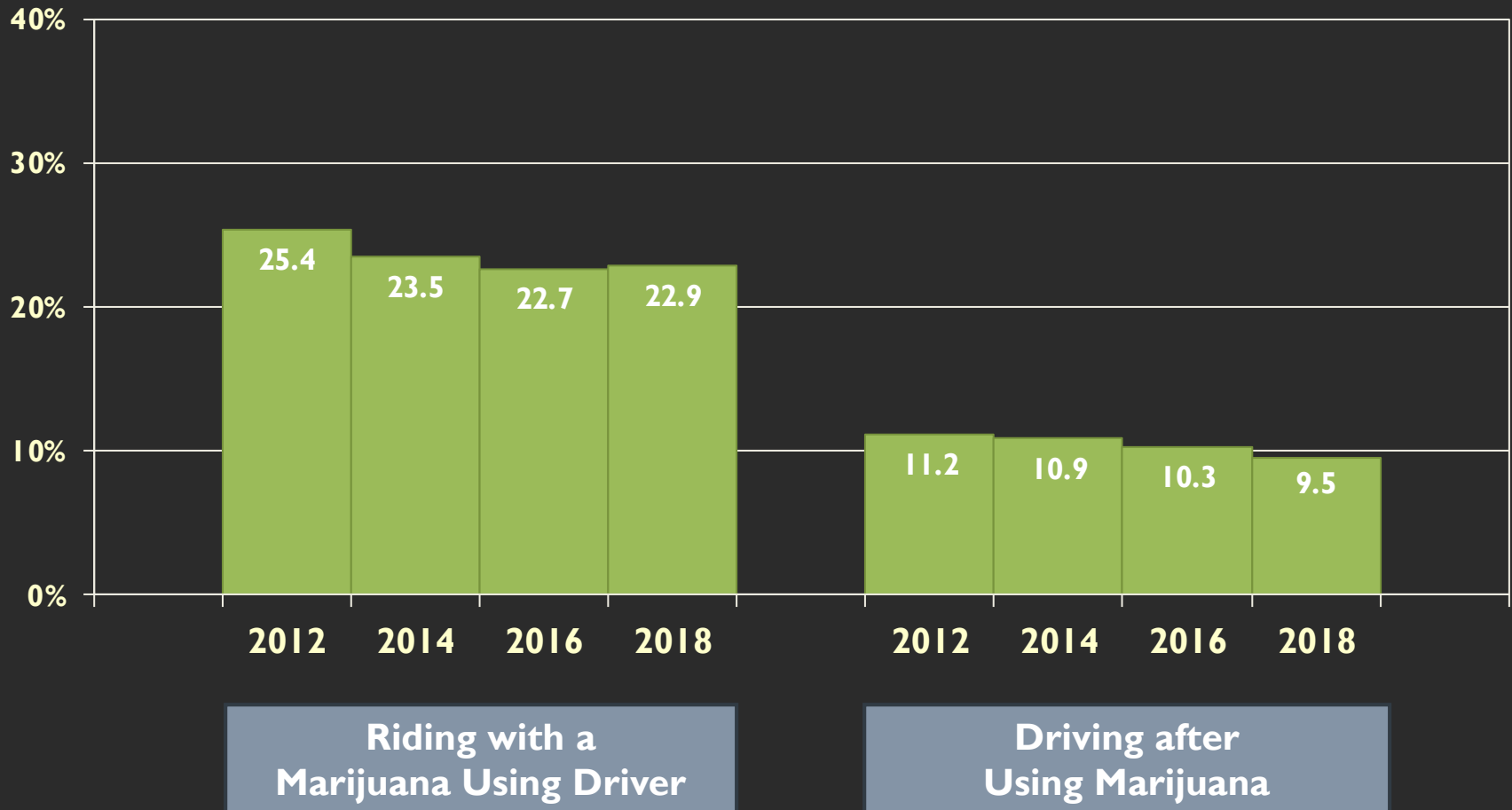
## Past-30-Day Prevalence Among High School Students





# Marijuana and Driving Trends

## Past-30-Day Prevalence Among High School Students

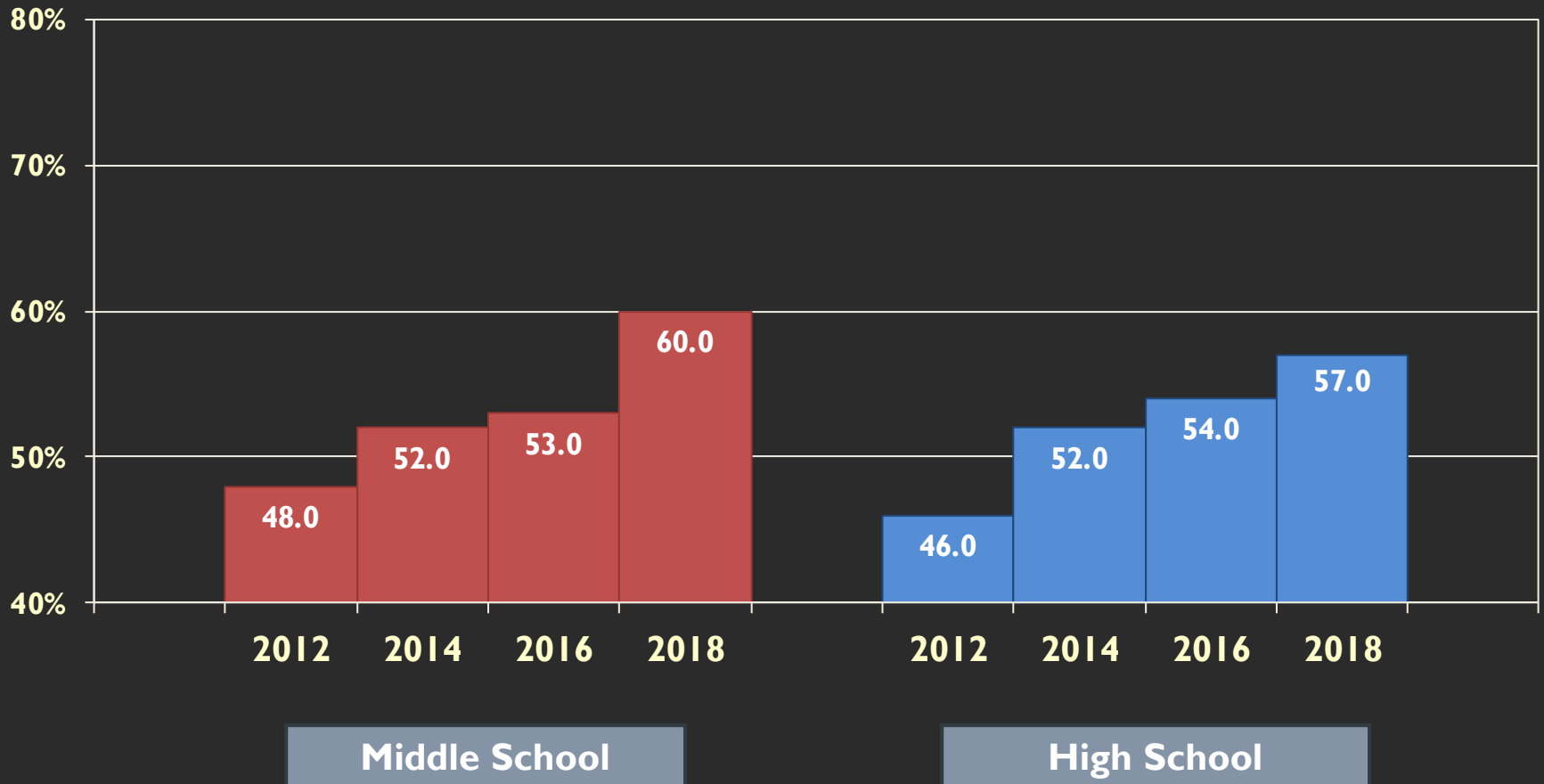


# Student Attitudes About School

- Youth attitudes about school and community vary across demographic and geographic groups.
- Rates typically show only small changes over time.
- Since 2012, there has been a notable decline in student attitudes toward or commitment to school.
- Attitudes about school are correlated with youth health behavior.

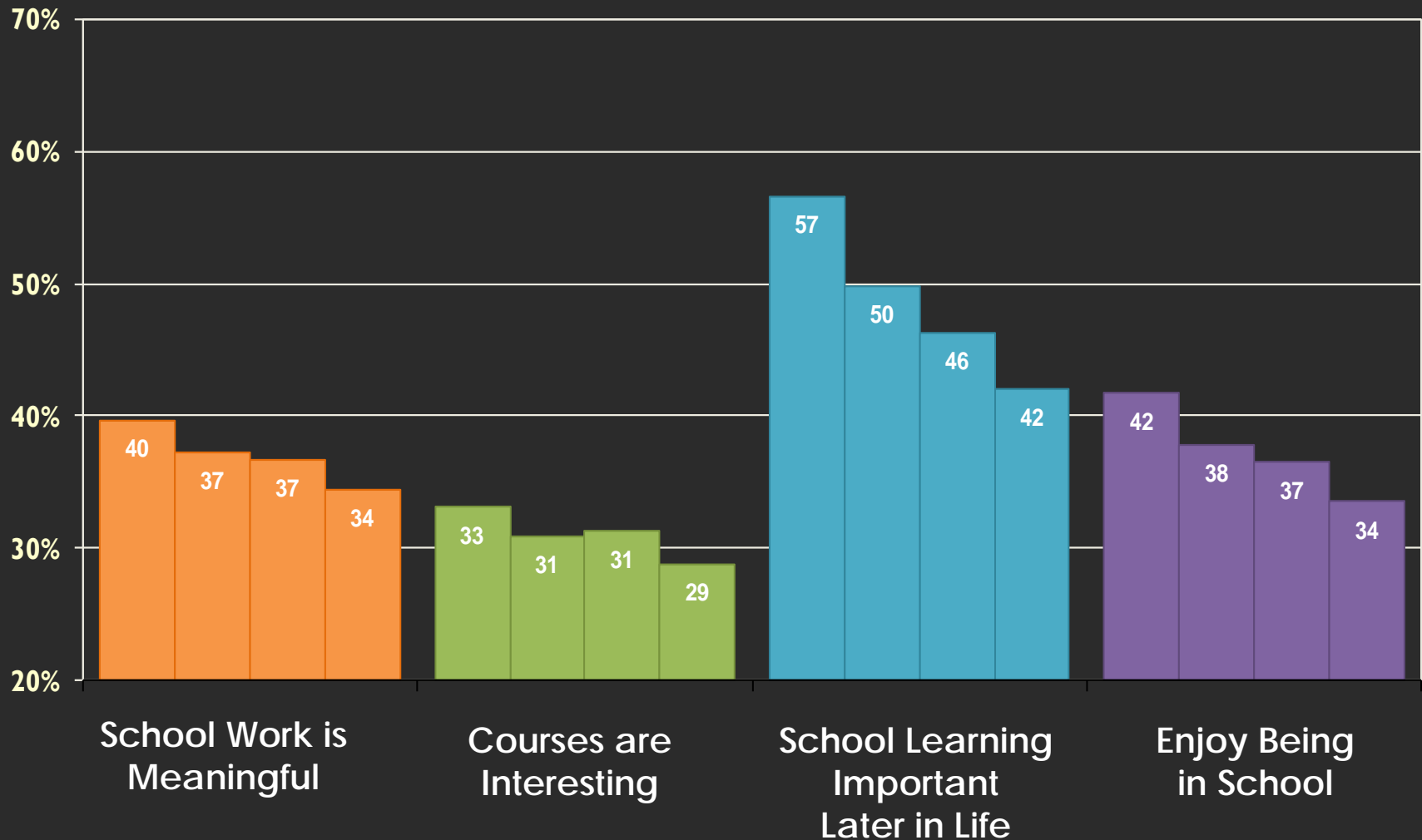
# Lack of Commitment to School

## Percentage of Students at High Risk by Grade Cohort



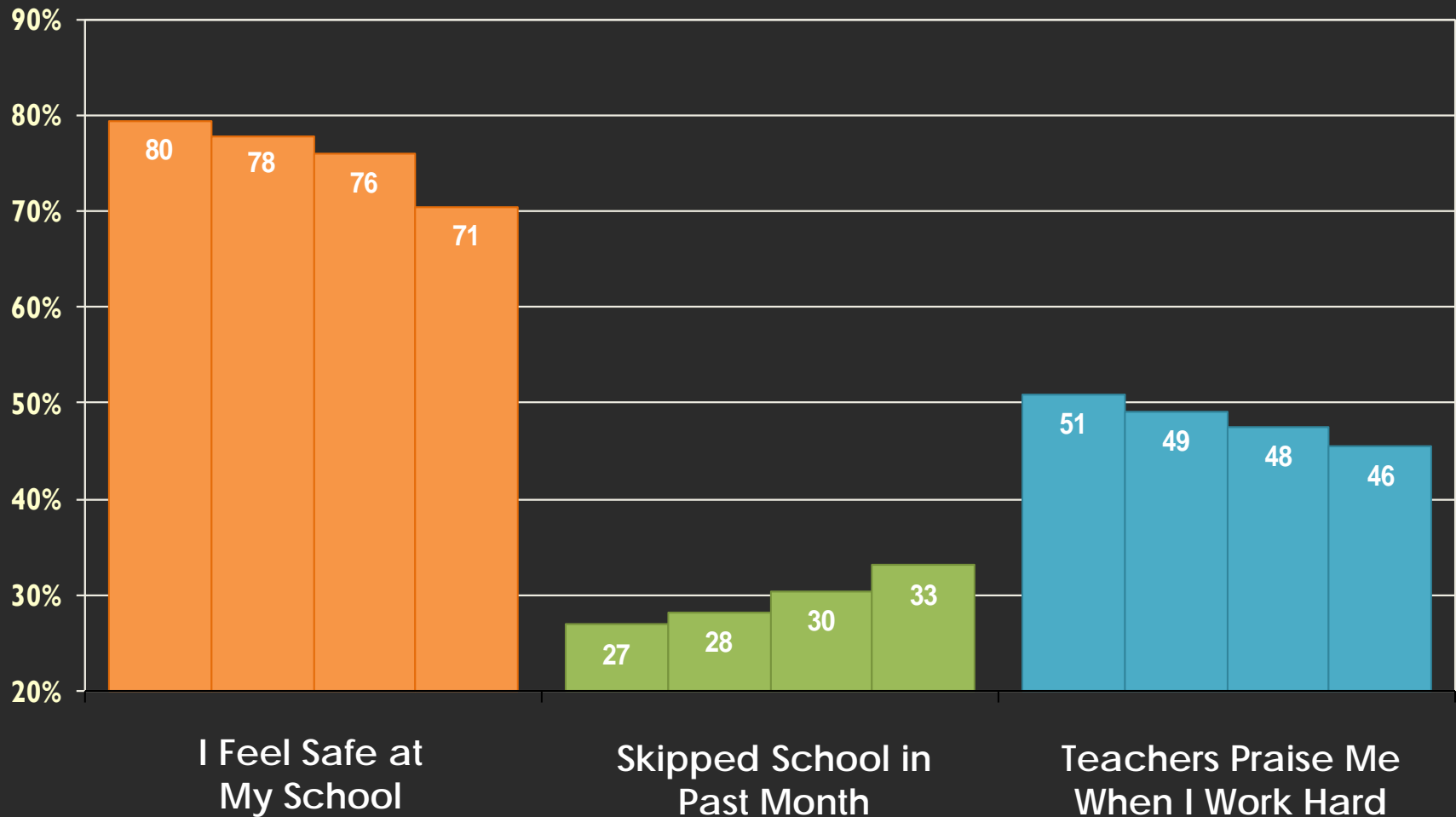
# Lack of Commitment to School

Responses to Individual Scale Items—2012 to 2018



# Attitudes Toward School

Responses to Individual Items—2012 to 2018



# Relationship Between “School Work is Important” and Substance Use

## Past-30-Day Prevalence Among High School Students

