



Access, Outcomes and Performance Measures in Children's Behavioral Health Services

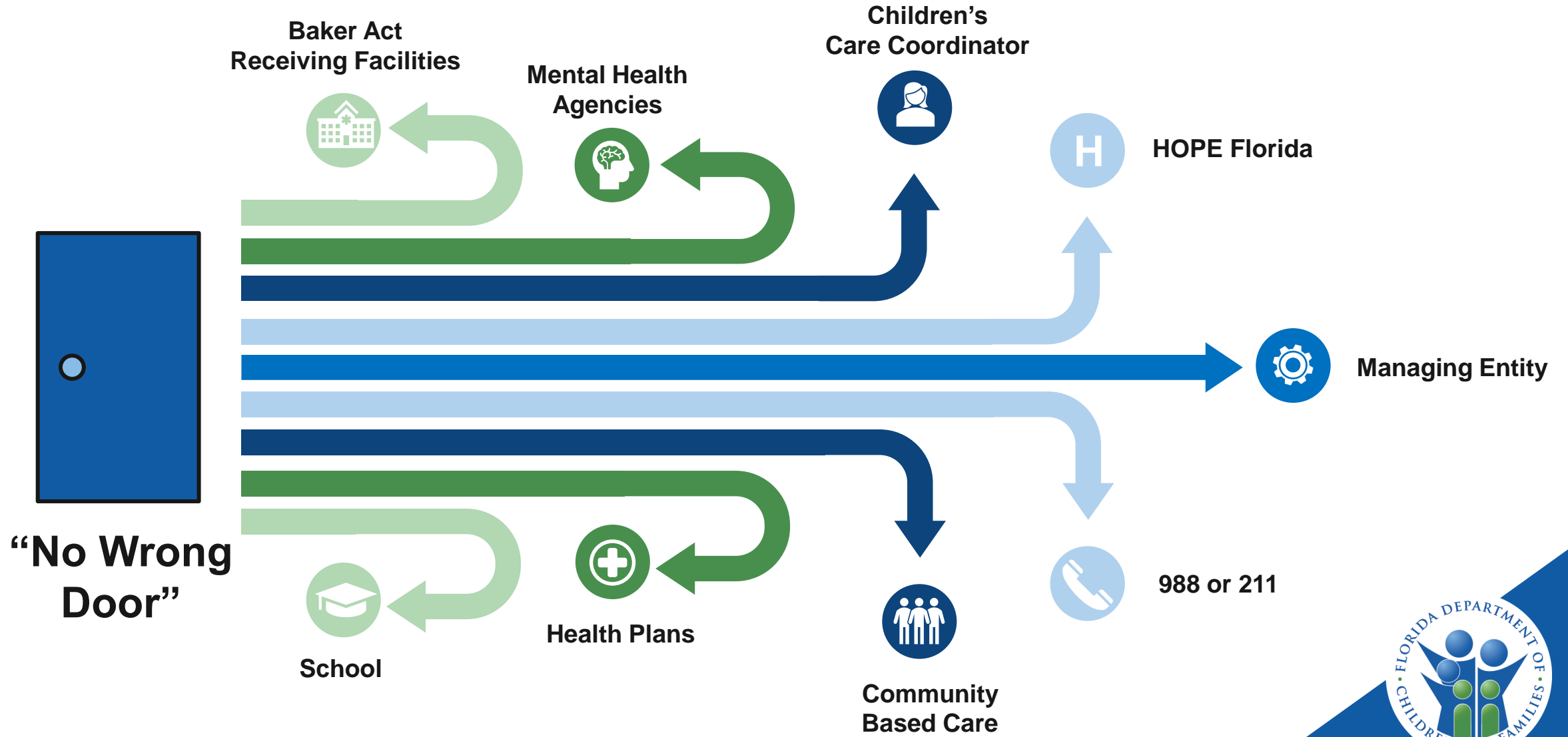
Florida Department of Children and Families



ACCESS TO CARE



ENTRY POINTS





CARE COORDINATION



CARE COORDINATION OVERVIEW

Care
Coordination
serves to:

- Assist individuals who are not effectively connected with the services

Care
Coordination
supports:

- Successful transitions from higher levels of care to effective community-based care

Care
Coordination
connects
systems
including:

- Behavioral health
- Primary care
- Peer and natural supports
- Housing
- Education
- Vocation
- Justice systems



AFTER INITIAL ASSESSMENT

Revise as needed

Least restrictive level of care

There is no one size fits all

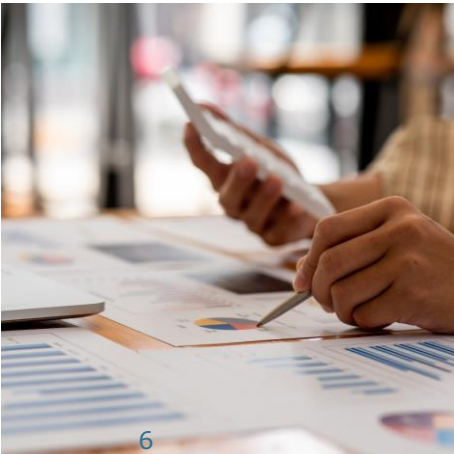


Care plan created and differs with each case



Measurable goals

Monitor progress

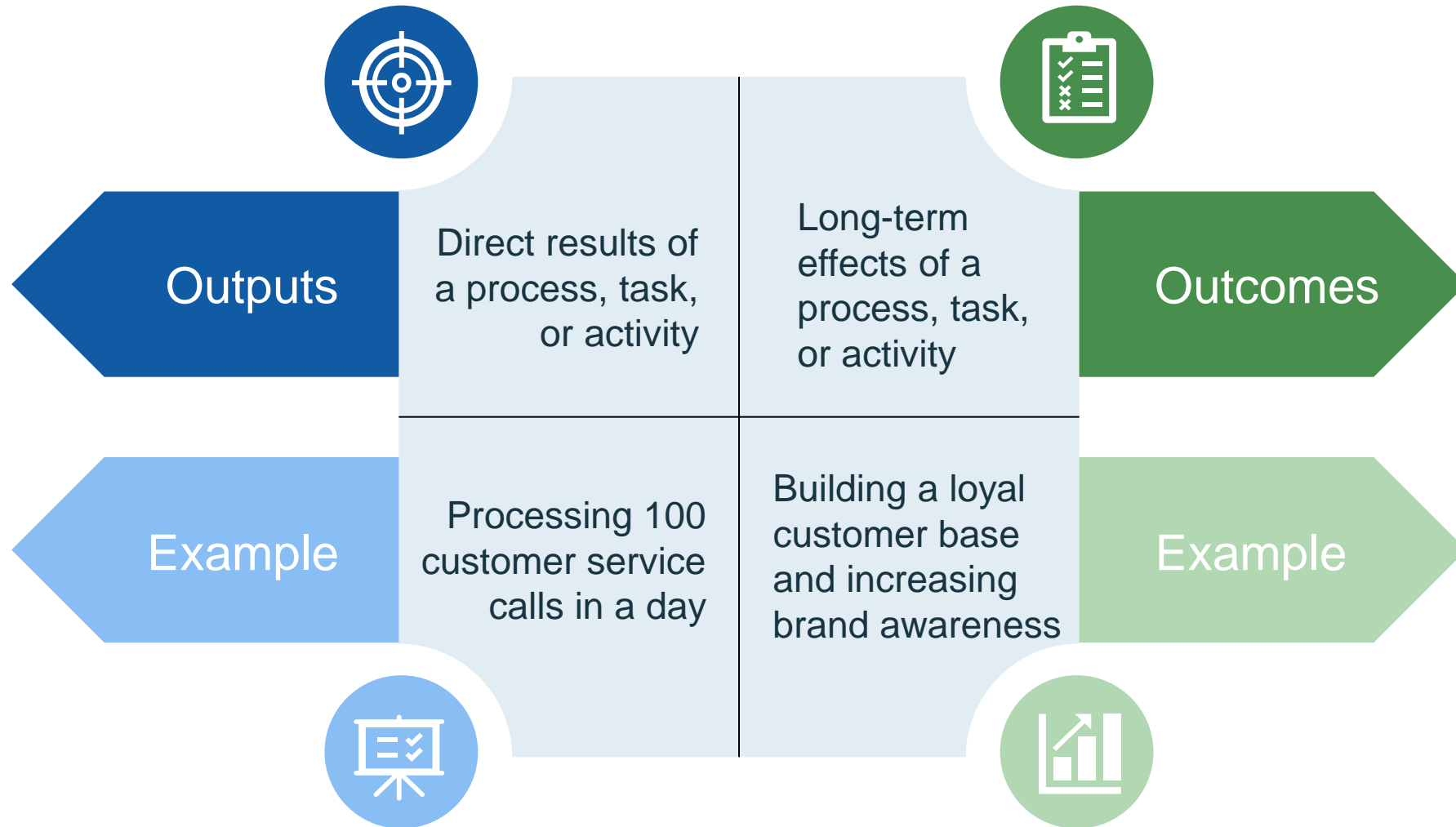




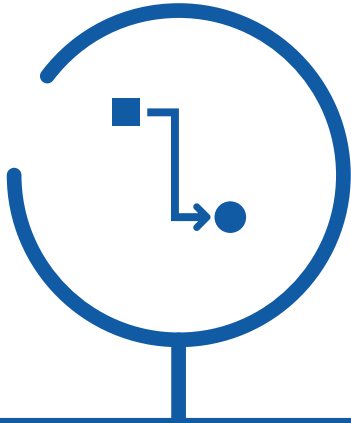
IMPORTANCE OF OUTCOME MEASURES



OUTPUTS & OUTCOMES



QUALITY MEASURES



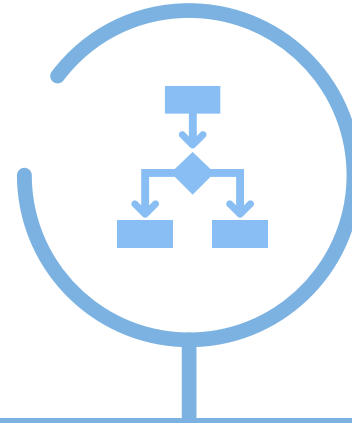
PROCESS

Actions used to reach a goal



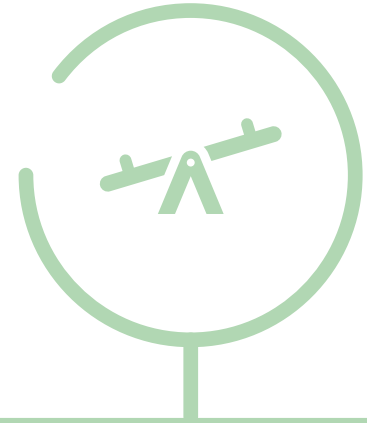
OUTCOME

Patient's health status



STRUCTURAL

Capacity of the organization



BALANCING

Unintended consequences of a QI project



MENTAL HEALTH NATIONAL OUTCOME MEASURES (NOMS)

Sociodemographic characteristics of clients served

Outcomes of care

Use of selected evidence-based practices

Client assessment of care

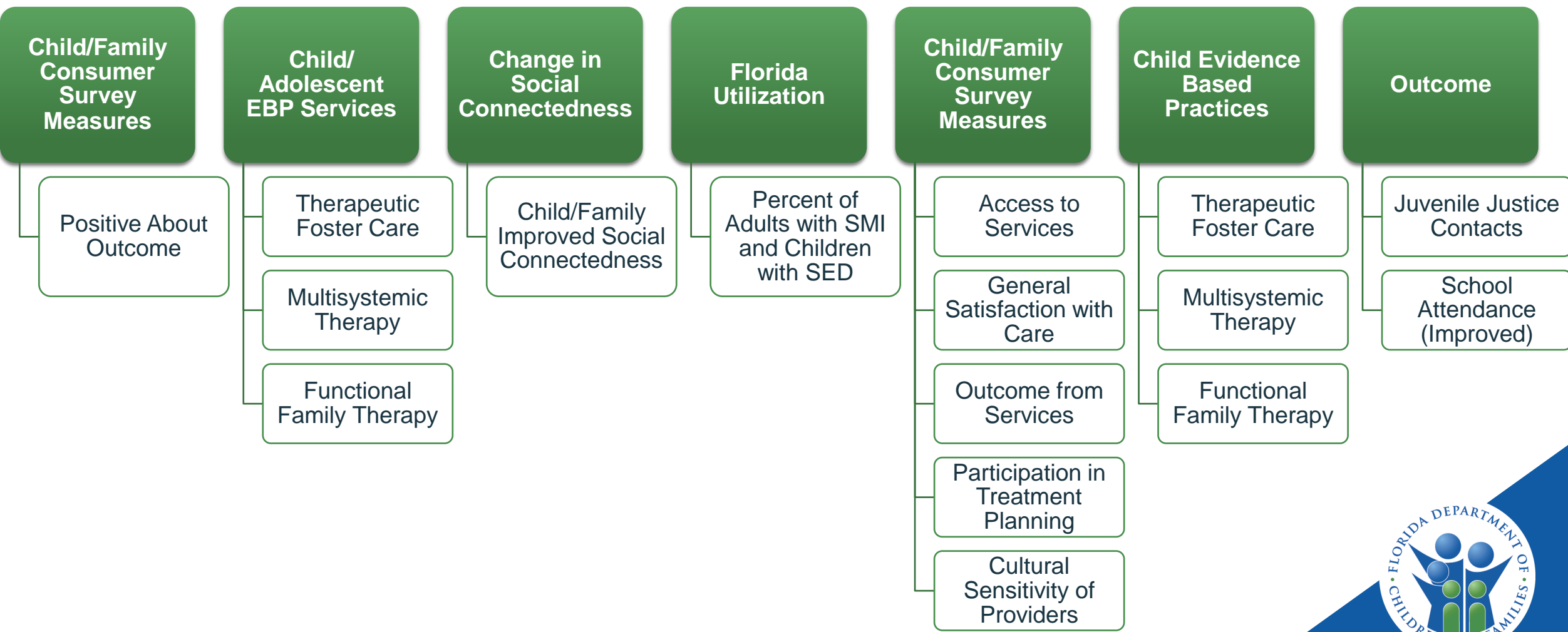
Insurance status

Living situation, employment status

Readmission to state psychiatric hospitals



MENTAL HEALTH NATIONAL OUTCOME MEASURES (NOMS)



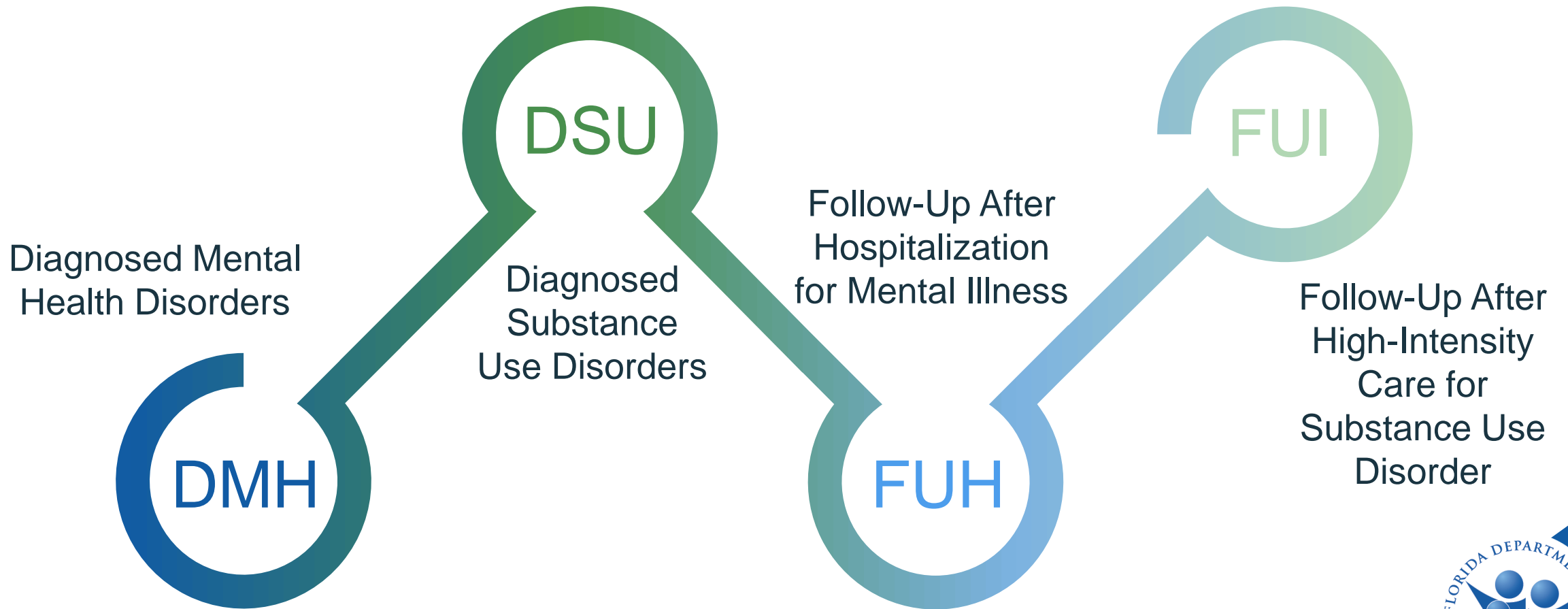
HEALTHCARE EFFECTIVENESS DATA AND INFORMATION SET (HEDIS) MEASURES



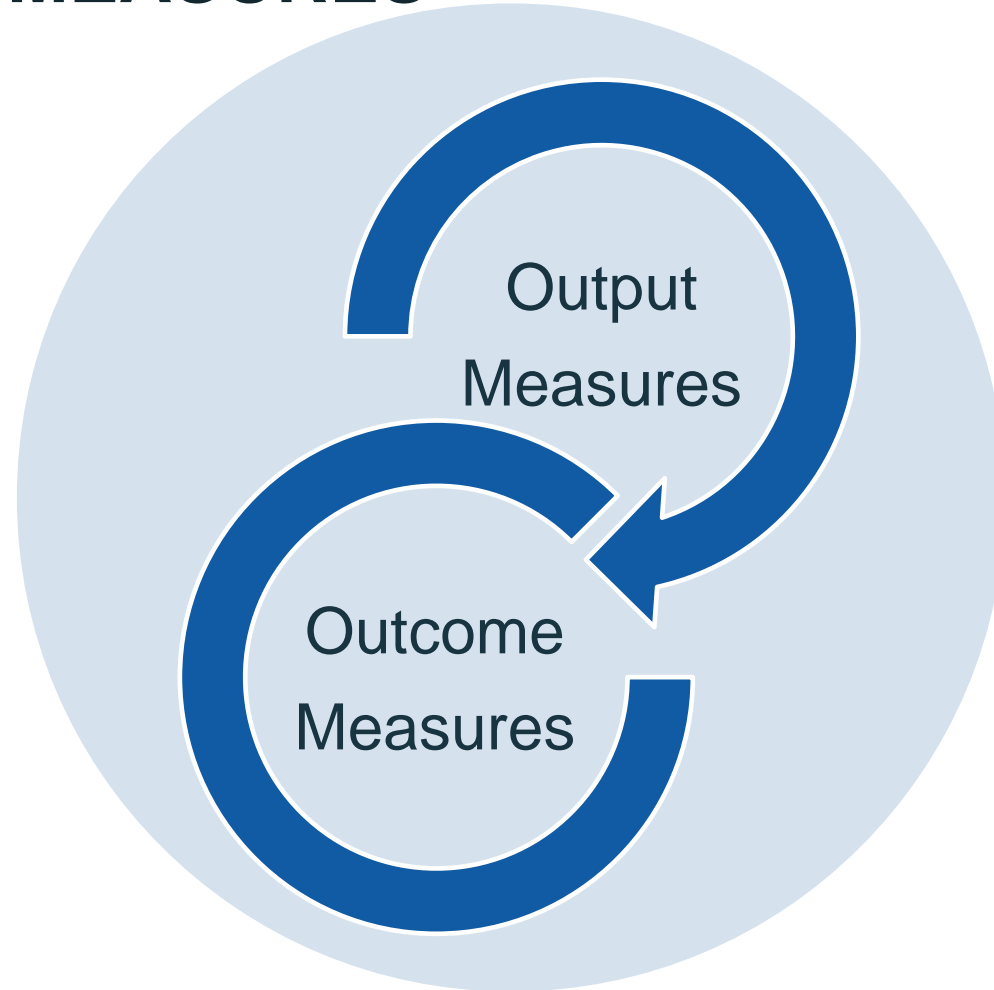
- Effectiveness of Care
- Access/Availability
- Utilization
- Electronic Clinical Data Systems



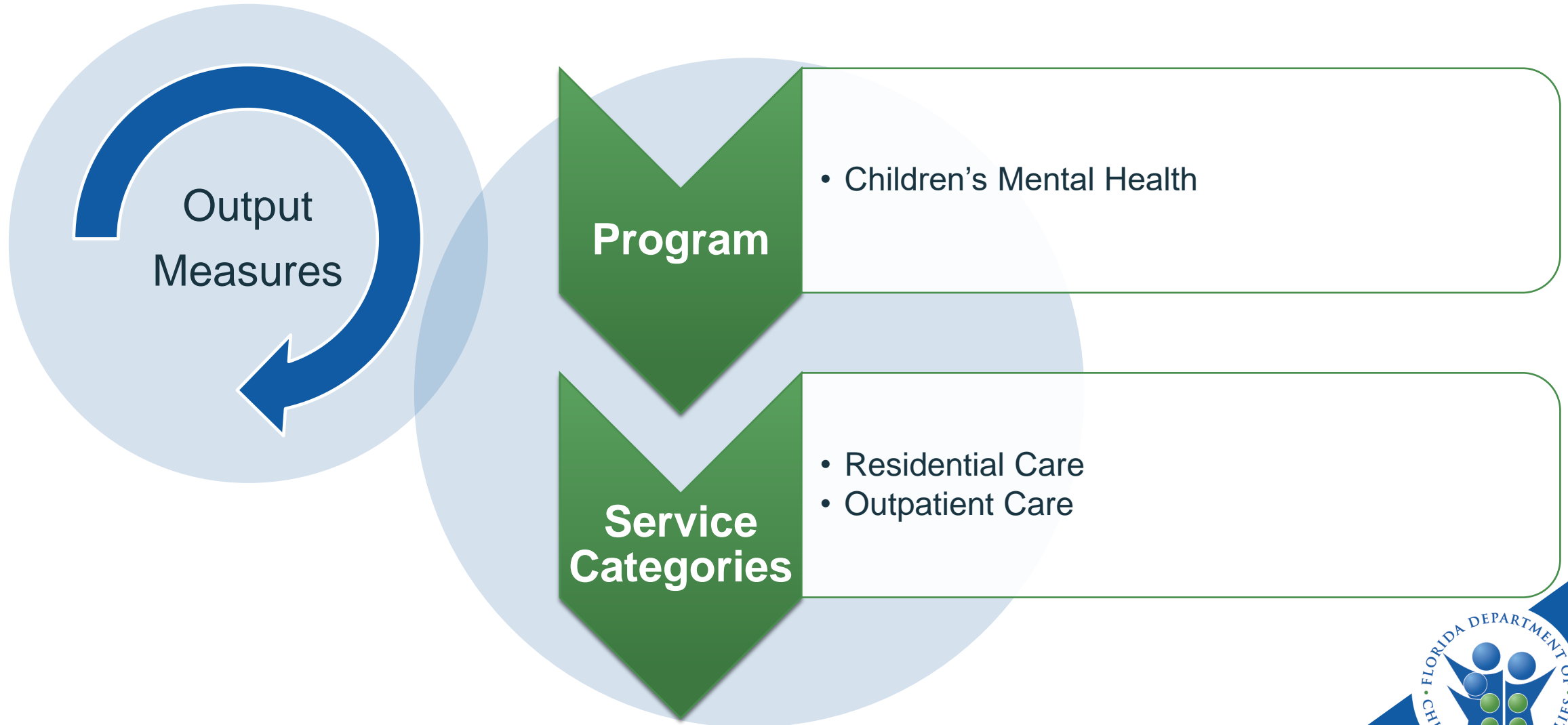
HEDIS BEHAVIORAL HEALTH PERFORMANCE MEASURES



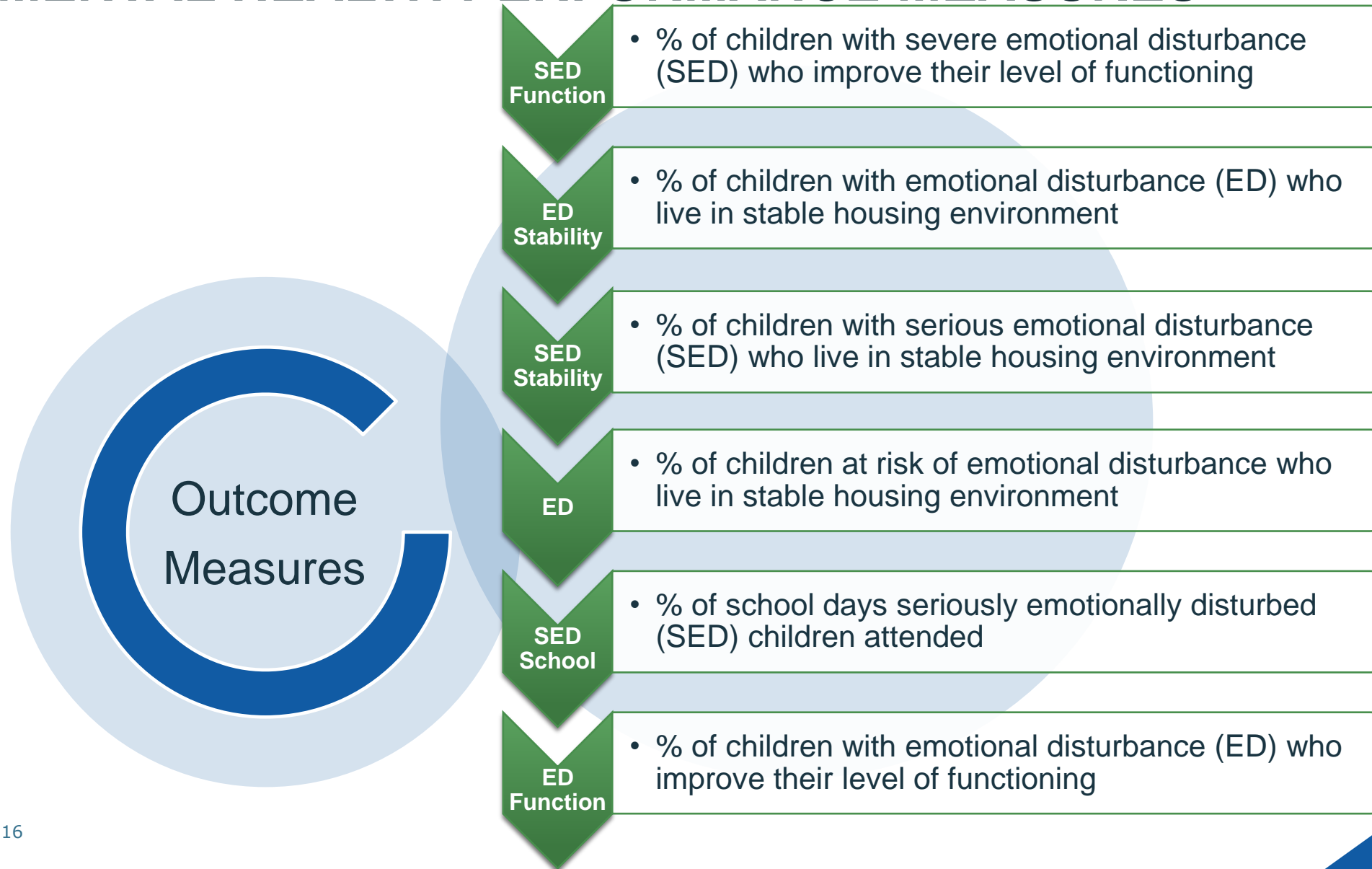
SAMHSA CHILDREN'S COMMUNITY MENTAL HEALTH PERFORMANCE MEASURES



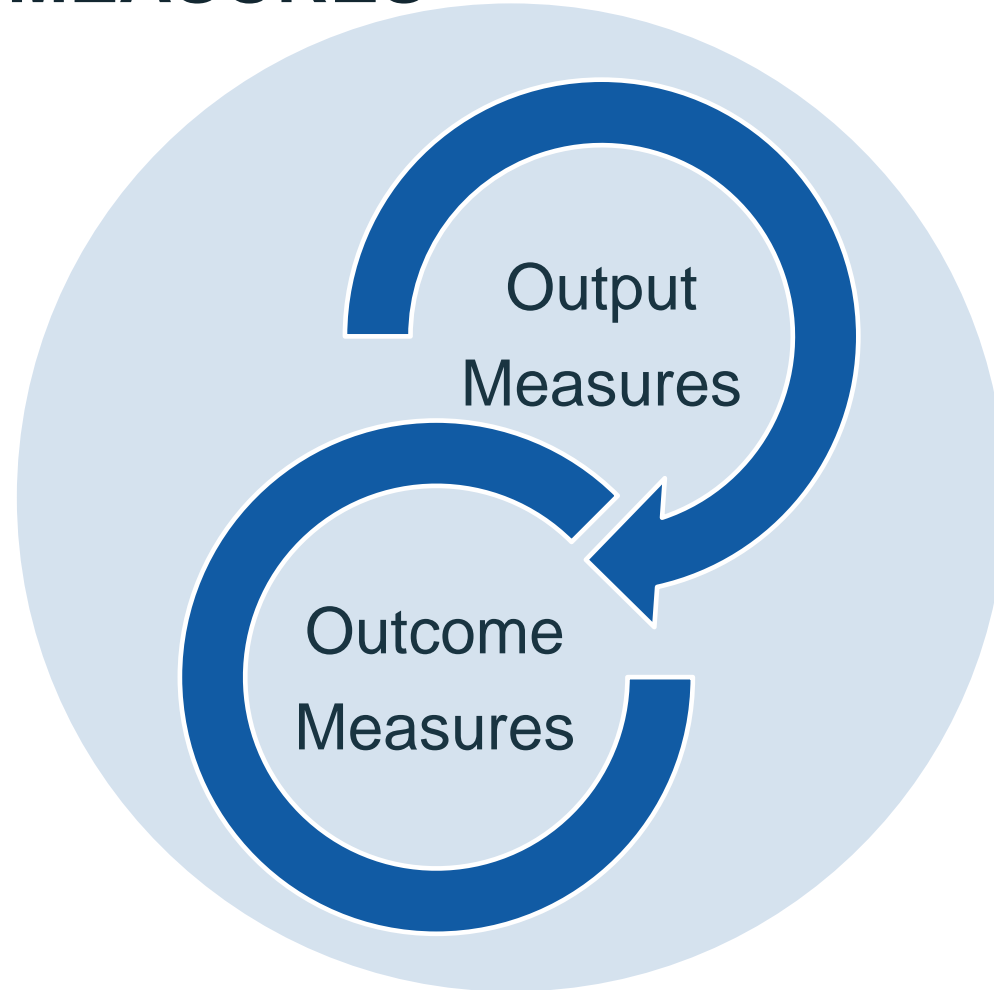
MENTAL HEALTH PERFORMANCE MEASURES



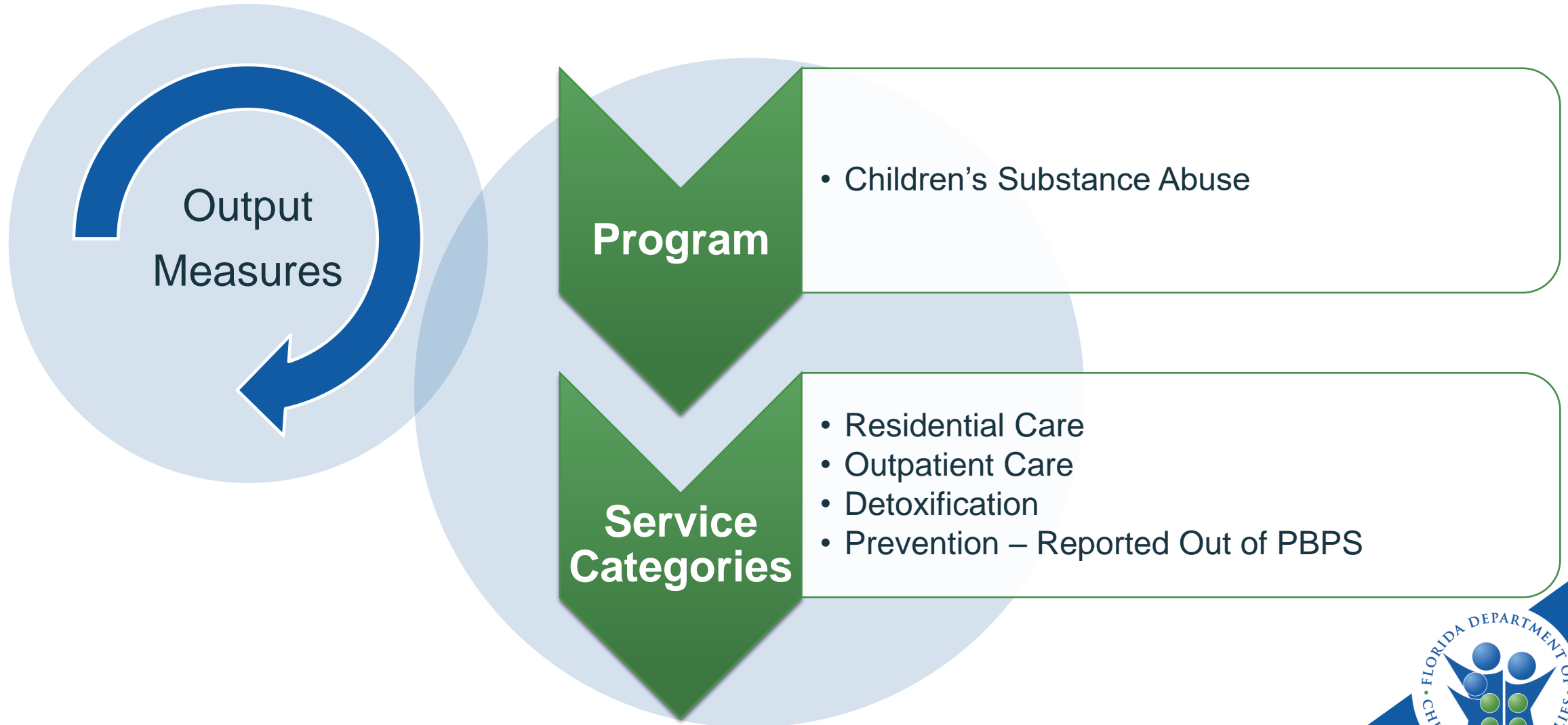
MENTAL HEALTH PERFORMANCE MEASURES



SAMHSA CHILDREN'S COMMUNITY SUBSTANCE ABUSE PERFORMANCE MEASURES



SUBSTANCE ABUSE PERFORMANCE MEASURES



SUBSTANCE ABUSE PERFORMANCE MEASURES

